

# PE/Cyanine7 Rabbit anti-Mouse CD62L/L-Selectin mAb

Catalog No.: A27889

## Basic Information

### Observed MW

### Calculated MW

42kDa

### Category

Primary antibody

### Applications

FC

### Cross-Reactivity

Mouse

### CloneNo number

ARC69898

### Conjugate

PE-Cy7. Ex:565nm. Em:778nm.

## Recommended Dilutions

FC 5  $\mu$ l per  $10^6$  cells in  
100  $\mu$ l volume

## Background

Enables cell adhesion molecule binding activity. Acts upstream of or within response to ATP. Located in external side of plasma membrane. Is expressed in brain; brainstem; submandibular gland epithelium; and testis. Used to study type 1 diabetes mellitus. Human ortholog(s) of this gene implicated in Crohn's disease; IgA glomerulonephritis; and ulcerative colitis. Orthologous to human SELL (selectin L).

## Immunogen Information

### Gene ID

20343

### Swiss Prot

P18337

### Immunogen

Recombinant protein (or fragment). This information is considered to be commercially sensitive.

### Synonyms

Lnr; CD62L; LAM-1; Ly-22; Lyam1; LECAM1; Ly-m22; Lyam-1; LECAM-1; L-selectin

## Contact

☎ | 400-999-6126

✉ | [cn.market@abclonal.com.cn](mailto:cn.market@abclonal.com.cn)

🌐 | [www.abclonal.com.cn](http://www.abclonal.com.cn)

## Product Information

### Source

Rabbit

### Isotype

IgG

### Purification

Affinity purification

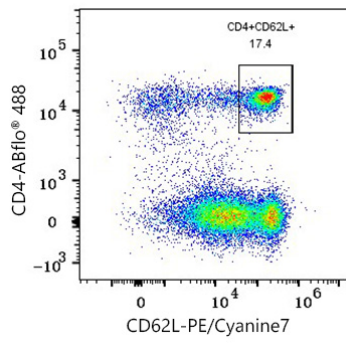
### Storage

Store at 2-8°C. Avoid freeze.

Buffer: PBS with 0.09% Sodium azide, 0.2% BSA, pH7.3.

## Validation Data

---



Flow cytometry:  $1 \times 10^6$  C57BL/6 mouse splenocytes were surface-stained with ABflo® 488 Rabbit anti-Mouse CD4 mAb (A24720, 5  $\mu$ l/Test) and PE/Cyanine7 Rabbit anti-Mouse CD62L mAb (A27889, 5  $\mu$ l/Test, right).