

PE Rabbit anti-Human CD10 mAb

Catalog No.: A27893

Basic Information

Observed MW

Calculated MW

86kDa

Category

Primary antibody

Applications

FC

Cross-Reactivity

Human, Cynomolgus

CloneNo number

ARC73991

Conjugate

PE. Ex:565nm. Em:574nm.

Background

The protein encoded by this gene is a type II transmembrane glycoprotein and a common acute lymphocytic leukemia antigen that is an important cell surface marker in the diagnosis of human acute lymphocytic leukemia (ALL). The encoded protein is present on leukemic cells of pre-B phenotype, which represent 85% of cases of ALL. This protein is not restricted to leukemic cells, however, and is found on a variety of normal tissues. The protein is a neutral endopeptidase that cleaves peptides at the amino side of hydrophobic residues and inactivates several peptide hormones including glucagon, enkephalins, substance P, neurotensin, oxytocin, and bradykinin.

Recommended Dilutions

FC 5 µl per 10⁶ cells in
100 µl volume

Immunogen Information

Gene ID

4311

Swiss Prot

P08473

Immunogen

Recombinant protein (or fragment). This information is considered to be commercially sensitive.

Synonyms

NEP; SFE; CD10; CALLA; CMT2T; SCA43

Contact

☎ | 400-999-6126

✉ | cn.market@abclonal.com.cn

🌐 | www.abclonal.com.cn

Product Information

Source

Rabbit

Isotype

IgG

Purification

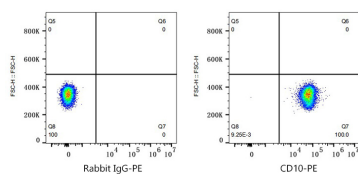
Affinity purification

Storage

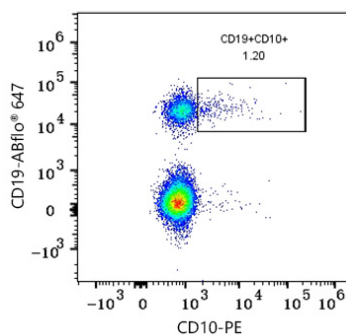
Store at 2-8°C. Avoid freeze.

Buffer: PBS containing 0.2% BSA, preserved with proclin300 or sodium azide (as specified on the Certificate of Analysis), pH 7.3.

Validation Data



Flow cytometry: 1×10^6 Daudi cells were surface-stained with PE Rabbit IgG isotype control (A24172, 5 µl/Test, left) or PE Rabbit anti-Human CD10 mAb (A27893, 5 µl/Test, right).



Flow cytometry: 1×10^6 Cynomolgus PBMC were surface-stained with ABflo® 647 Rabbit anti-Human/Monkey CD19 mAb (A23009, 5 µl/Test) and PE Rabbit anti-Human CD10 mAb (A27893, 5 µl/Test, right). Cells in the lymphocyte gate were used for analysis.