

# CD352/SLAMF6 Rabbit mAb

Catalog No.: A27903 **Recombinant**

## Basic Information

### Observed MW

50-70kDa

### Calculated MW

39kDa

### Category

Primary antibody

### Applications

WB,IF-P,ELISA

### Cross-Reactivity

Mouse

### CloneNo number

ARC75420

## Background

Involved in natural killer cell differentiation and natural killer cell proliferation. Predicted to be located in plasma membrane. Predicted to be active in external side of plasma membrane. Orthologous to human SLAMF6 (SLAM family member 6).

## Recommended Dilutions

**WB** 1:2500 - 1:10000

**IF-P** 1:100 - 1:200

**ELISA** Recommended starting concentration is 1 µg/mL. Please optimize the concentration based on your specific assay requirements.

## Immunogen Information

### Gene ID

30925

### Swiss Prot

Q9ET39

### Immunogen

Recombinant protein (or fragment). This information is considered to be commercially sensitive.

### Synonyms

KAL1; NTBA; KAL1b; Ly108; NTB-A; SF2000

## Contact

☎ | 400-999-6126

✉ | [cn.market@abclonal.com.cn](mailto:cn.market@abclonal.com.cn)

🌐 | [www.abclonal.com.cn](http://www.abclonal.com.cn)

## Product Information

### Source

Rabbit

### Isotype

IgG

### Purification

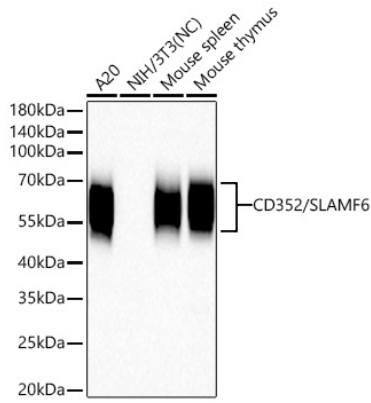
Affinity purification

### Storage

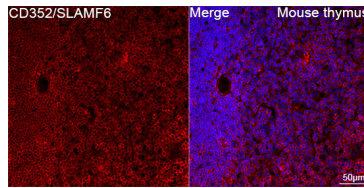
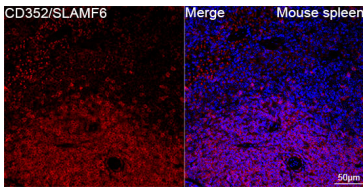
Store at -20°C. Avoid freeze / thaw cycles.

Buffer: PBS with 0.09% Sodium azide, 0.05% BSA, 50% glycerol, pH7.3.

## Validation Data



Western blot analysis of various lysates using CD352/SLAMF6 Rabbit mAb (A27903) at 1:5000 dilution incubated overnight at 4°C. Secondary antibody: HRP-conjugated Goat anti-Rabbit IgG (H+L) (AS014) at 1:10000 dilution. Lysates/proteins: 25 µg per lane. Blocking buffer: 3% nonfat dry milk in TBST. Detection: ECL Basic Kit (RM00020). Negative control (NC): NIH/3T3. Exposure time: 45s.



Confocal imaging of paraffin-embedded Mouse spleen tissue using CD352/SLAMF6 Rabbit mAb (A27903, dilution 1:200) followed by a further incubation with Cy3 Goat Anti-Rabbit IgG (H+L) (AS007, dilution 1:500) (Red). DAPI was used for nuclear staining (Blue). High pressure antigen retrieval performed with 0.01M Citrate Buffer (pH 6.0) prior to IF staining. Objective: 40x.

Confocal imaging of paraffin-embedded Mouse thymus tissue using CD352/SLAMF6 Rabbit mAb (A27903, dilution 1:200) followed by a further incubation with Cy3 Goat Anti-Rabbit IgG (H+L) (AS007, dilution 1:500) (Red). DAPI was used for nuclear staining (Blue). High pressure antigen retrieval performed with 0.01M Citrate Buffer (pH 6.0) prior to IF staining. Objective: 40x.