

# Parvalbumin/PVALB Rabbit pAb

Catalog No.: A2791 **5 Publications**

## Basic Information

### Observed MW

15kDa

### Calculated MW

12kDa

### Category

Primary antibody

### Applications

ELISA, WB, IHC-P, IF/ICC

### Cross-Reactivity

Human, Mouse, Rat

## Background

The protein encoded by this gene is a high affinity calcium ion-binding protein that is structurally and functionally similar to calmodulin and troponin C. The encoded protein is thought to be involved in muscle relaxation. Alternative splicing results in multiple transcript variants.

## Recommended Dilutions

<b>WB</b>	1:500 - 1:1000
<b>IHC-P</b>	1:50 - 1:200
<b>IF/ICC</b>	1:50 - 1:200

## Immunogen Information

### Gene ID

5816

### Swiss Prot

P20472

### Immunogen

Recombinant fusion protein containing a sequence corresponding to amino acids 1-110 of human Parvalbumin (PVALB) (NP\_002845.1).

### Synonyms

D22S749; Parvalbumin (PVALB)

## Contact

☎ | 400-999-6126

✉ | [cn.market@abclonal.com.cn](mailto:cn.market@abclonal.com.cn)

🌐 | [www.abclonal.com.cn](http://www.abclonal.com.cn)

## Product Information

### Source

Rabbit

### Isotype

IgG

### Purification

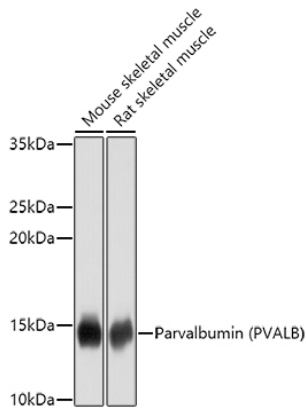
Affinity purification

### Storage

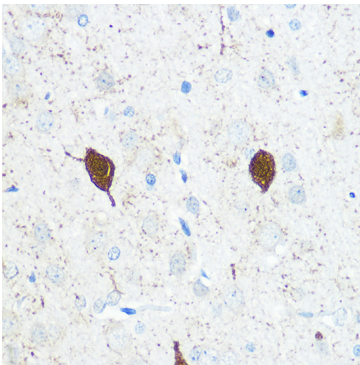
Store at -20°C. Avoid freeze / thaw cycles.

Buffer: PBS with 0.09% Sodium azide, 50% glycerol, pH7.3.

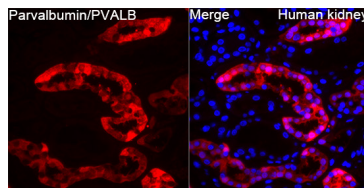
## Validation Data



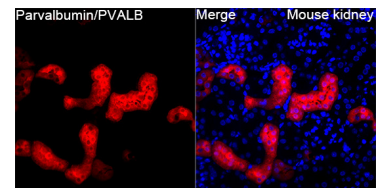
Western blot analysis of various lysates using Parvalbumin (PVALB) Rabbit pAb (A2791) at 1:1000 dilution. Secondary antibody: HRP-conjugated Goat anti-Rabbit IgG (H+L) (AS014) at 1:10000 dilution. Lysates/proteins: 25µg per lane. Blocking buffer: 3% nonfat dry milk in TBST. Detection: ECL Basic Kit (RM00020). Exposure time: 3s.



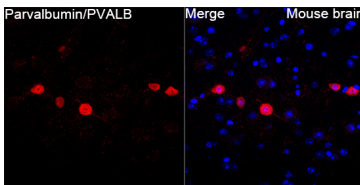
Immunohistochemistry analysis of paraffin-embedded Rat brain using Parvalbumin (PVALB) Rabbit pAb (A2791) at dilution of 1:100 (40x lens). Microwave antigen retrieval performed with 0.01M PBS Buffer (pH 7.2) prior to IHC staining.



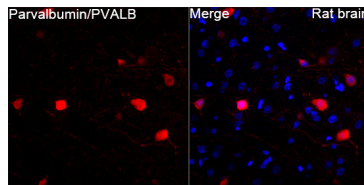
Immunofluorescence analysis of Human kidney tissue using Parvalbumin/PVALB Rabbit pAb (A2791) at a dilution of 1:100 (40x lens). Secondary antibody: Cy3-conjugated Goat anti-Rabbit IgG (H+L)(AS007) at 1:500 dilution. Blue: DAPI for nuclear staining. High pressure antigen retrieval performed with 0.01M Citrate Buffer(pH 6.0) prior to IF staining.



Immunofluorescence analysis of Mouse kidney tissue using Parvalbumin/PVALB Rabbit pAb (A2791) at a dilution of 1:100 (40x lens). Secondary antibody: Cy3-conjugated Goat anti-Rabbit IgG (H+L)(AS007) at 1:500 dilution. Blue: DAPI for nuclear staining. High pressure antigen retrieval performed with 0.01M Citrate Buffer(pH 6.0) prior to IF staining.



Immunofluorescence analysis of Mouse brain tissue using Parvalbumin/PVALB Rabbit pAb (A2791) at a dilution of 1:100 (40x lens). Secondary antibody: Cy3-conjugated Goat anti-Rabbit IgG (H+L)(AS007) at 1:500 dilution. Blue: DAPI for nuclear staining. Microwave antigen retrieval performed with 0.01M Citrate Buffer(pH 6.0) prior to IF staining.



Immunofluorescence analysis of Rat brain tissue using Parvalbumin/PVALB Rabbit pAb (A2791) at a dilution of 1:100 (40x lens). Secondary antibody: Cy3-conjugated Goat anti-Rabbit IgG (H+L)(AS007) at 1:500 dilution. Blue: DAPI for nuclear staining. Microwave antigen retrieval performed with 0.01M Citrate Buffer(pH 6.0) prior to IF staining.