

PE Rabbit anti-Human CD200R mAb

Catalog No.: A27910

Basic Information

Observed MW

Calculated MW

37kDa

Category

Primary antibody

Applications

FC

Cross-Reactivity

Human

CloneNo number

ARC65347

Conjugate

PE. Ex:565nm. Em:574nm.

Recommended Dilutions

FC 5 μ l per 10^6 cells in
100 μ l volume

Background

This gene encodes a receptor for the OX-2 membrane glycoprotein. Both the receptor and substrate are cell surface glycoproteins containing two immunoglobulin-like domains. This receptor is restricted to the surfaces of myeloid lineage cells and the receptor-substrate interaction may function as a myeloid downregulatory signal. Mouse studies of a related gene suggest that this interaction may control myeloid function in a tissue-specific manner. Alternative splicing of this gene results in multiple transcript variants.

Immunogen Information

Gene ID

131450

Swiss Prot

Q8TD46

Immunogen

Recombinant protein (or fragment). This information is considered to be commercially sensitive.

Synonyms

OX2R; MOX2R; CD200R; HCRTR2

Contact

☎ | 400-999-6126

✉ | cn.market@abclonal.com.cn

🌐 | www.abclonal.com.cn

Product Information

Source

Rabbit

Isotype

IgG

Purification

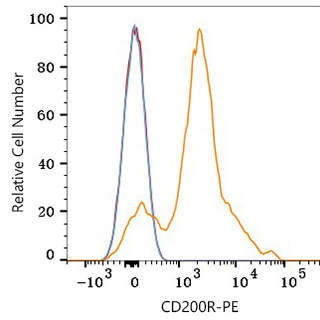
Affinity purification

Storage

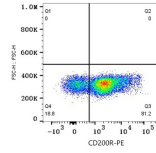
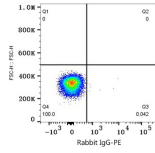
Store at 2-8°C. Avoid freeze.

Buffer: PBS with 0.09% Sodium azide, 0.2% BSA, pH7.3.

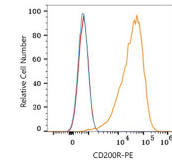
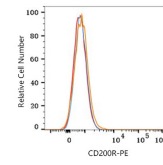
Validation Data



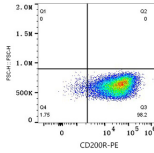
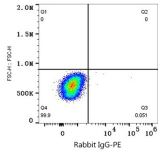
Flow cytometry: 1×10^6 Human PBMC were surface-stained with PE Rabbit anti-Human CD200R mAb (A27910,5 $\mu\text{l}/\text{Test}$,orange line) or PE Rabbit IgG isotype control (A24172,5 $\mu\text{l}/\text{Test}$,blue line). Non-fluorescently stained cells were used as blank control (red line). Cells in the lymphocyte gate were used for analysis.



Flow cytometry: 1×10^6 Human PBMC were surface-stained with PE Rabbit IgG isotype control (A24172,5 $\mu\text{l}/\text{Test}$,left) or PE Rabbit anti-Human CD200R mAb (A27910,5 $\mu\text{l}/\text{Test}$,right). Cells in the lymphocyte gate were used for analysis.



Flow cytometry: 1×10^6 Jurkat cells (negative control,left) and HEL cells (right) were surface-stained with PE Rabbit anti-Human CD200R mAb (A27910,5 $\mu\text{l}/\text{Test}$,orange line) or PE Rabbit IgG isotype control (A24172,5 $\mu\text{l}/\text{Test}$,blue line). Non-fluorescently stained cells were used as blank control (red line).



Flow cytometry: 1×10^6 HEL cells were surface-stained with PE Rabbit IgG isotype control (A24172,5 $\mu\text{l}/\text{Test}$,left) or PE Rabbit anti-Human CD200R mAb (A27910,5 $\mu\text{l}/\text{Test}$,right).