

ABflo® 488 Rabbit anti-Mouse CD21/CD35 mAb

Catalog No.: A27965

Basic Information

Observed MW

Calculated MW

113kDa

Category

Primary antibody

Applications

FC

Cross-Reactivity

Mouse

CloneNo number

ARC75079

Conjugate

ABflo® 488. Ex:491nm. Em:516nm.

Recommended Dilutions

FC ≤0.25 µg per million cells
in 100 µl volume

Background

Enables complement receptor activity. Acts upstream of or within with a negative effect on complement activation, alternative pathway. Acts upstream of or within several processes, including cellular response to lipopolysaccharide; immunoglobulin mediated immune response; and skeletal system development. Located in external side of plasma membrane. Is expressed in several structures, including brain; hemolymphoid system; liver; placenta; and yolk sac. Human ortholog(s) of this gene implicated in common variable immunodeficiency 7; nasopharynx carcinoma; and systemic lupus erythematosus. Orthologous to human CR2 (complement C3d receptor 2).

Immunogen Information

Gene ID

12902

Swiss Prot

P19070

Immunogen

Recombinant protein (or fragment). This information is considered to be commercially sensitive.

Synonyms

Cr1; C3DR; CD21; CD35; Cr-1; Cr-2

Contact

 | 400-999-6126

 | cn.market@abclonal.com.cn

 | www.abclonal.com.cn

Product Information

Source

Rabbit

Isotype

IgG

Purification

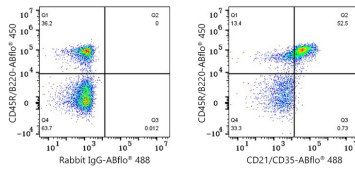
Affinity purification

Storage

Store at 2-8°C. Avoid freeze.

Buffer: PBS with 0.09% Sodium azide, 0.2% BSA, pH7.3.

Validation Data



Flow cytometry: 1×10^6 C57BL/6 mouse splenocytes were surface-stained with ABflo® 450 Rat anti-Mouse CD45R/B220 mAb (A27783, 5 μ l/Test) and ABflo® 488 Rabbit IgG isotype control (A22069, 5 μ l/Test, left) or ABflo® 488 Rabbit anti-Mouse CD21/CD35 mAb (A27965, 0.25 μ g, right).