

SLC18A2 Rabbit pAb

Catalog No.: A2799

Basic Information

Observed MW

56kDa

Calculated MW

56kDa

Category

Primary antibody

Applications

ELISA, WB, IHC-P

Cross-Reactivity

Human, Mouse, Rat

Background

This gene encodes a transmembrane protein that functions as an ATP-dependent transporter of monoamines, such as dopamine, norepinephrine, serotonin, and histamine. This protein transports amine neurotransmitters into synaptic vesicles. Polymorphisms in this gene may be associated with schizophrenia, bipolar disorder, and other neurological/psychiatric ailments.

Recommended Dilutions

| | |
|-------|-----------------|
| WB | 1:1000 - 1:2000 |
| IHC-P | 1:50 - 1:200 |

Immunogen Information

Gene ID

6571

Swiss Prot

Q05940

Immunogen

Recombinant fusion protein containing a sequence corresponding to amino acids 50-130 of human SLC18A2 (NP_003045.2).

Synonyms

SVAT; SVMT; VAT2; VMAT2; PKDYS2; SLC18A2

Contact

 | 400-999-6126

 | cn.market@abclonal.com.cn

 | www.abclonal.com.cn

Product Information

Source

Rabbit

Isotype

IgG

Purification

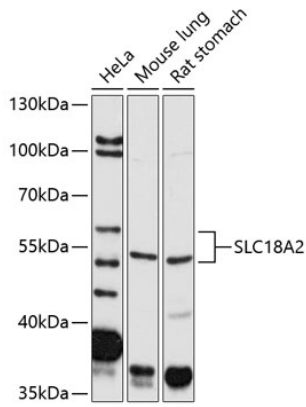
Affinity purification

Storage

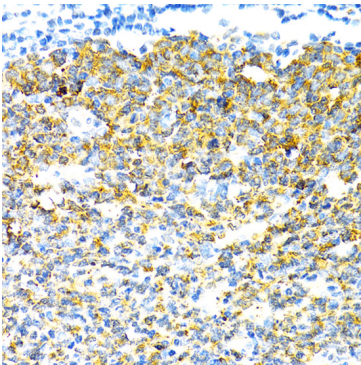
Store at -20°C. Avoid freeze / thaw cycles.

Buffer: PBS with 0.01% thimerosal, 50% glycerol, pH7.3.

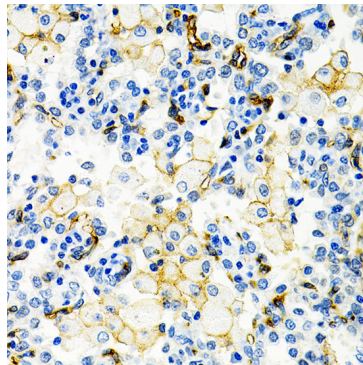
Validation Data



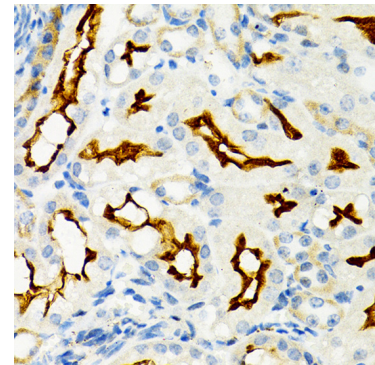
Western blot analysis of various lysates using SLC18A2 Rabbit pAb (A2799) at 1:2000 dilution. Secondary antibody: HRP Goat Anti-Rabbit IgG (H+L) (AS014) at 1:10000 dilution. Lysates/proteins: 25 μ g per lane. Blocking buffer: 3% nonfat dry milk in TBST. Detection: ECL Basic Kit (RM00020). Exposure time: 30s.



Immunohistochemistry analysis of SLC18A2 in paraffin-embedded human appendix tissue using SLC18A2 Rabbit pAb (A2799) at a dilution of 1:100 (40x lens). Microwave antigen retrieval was performed with 0.01 M PBS buffer (pH 7.2 \pm 0.2) prior to IHC staining.



Immunohistochemistry analysis of SLC18A2 in paraffin-embedded human lung cancer tissue using SLC18A2 Rabbit pAb (A2799) at a dilution of 1:100 (40x lens). Microwave antigen retrieval was performed with 0.01 M PBS buffer (pH 7.2 \pm 0.2) prior to IHC staining.



Immunohistochemistry analysis of SLC18A2 in paraffin-embedded mouse kidney tissue using SLC18A2 Rabbit pAb (A2799) at a dilution of 1:100 (40x lens). Microwave antigen retrieval was performed with 0.01 M PBS buffer (pH 7.2 \pm 0.2) prior to IHC staining.