

# RNASE2 Rabbit pAb

Catalog No.: A28007

## Basic Information

### Observed MW

18kDa

### Calculated MW

18kDa

### Category

Primary antibody

### Applications

WB,IF-P,IHC-P,ELISA

### Cross-Reactivity

Human, Mouse, Rat

## Background

Predicted to enable RNA nuclease activity and lipopolysaccharide binding activity. Predicted to be involved in chemotaxis; defense response to Gram-positive bacterium; and innate immune response in mucosa. Predicted to be located in lysosome. Predicted to be active in extracellular space. Orthologous to human RNASE2 (ribonuclease A family member 2) and RNASE3 (ribonuclease A family member 3).

## Recommended Dilutions

**WB** 1:3000 - 1:18000

**IF-P** 1:200 - 1:400

**IHC-P** 1:500 - 1:2000

**ELISA** Recommended starting concentration is 1 µg/mL. Please optimize the concentration based on your specific assay requirements.

## Immunogen Information

### Gene ID

53877

### Swiss Prot

O35291

### Immunogen

Recombinant protein (or fragment). This information is considered to be commercially sensitive.

### Synonyms

mR4; RNS2; Rnase2

## Contact

☎ | 400-999-6126

✉ | [cn.market@abclonal.com.cn](mailto:cn.market@abclonal.com.cn)

🌐 | [www.abclonal.com.cn](http://www.abclonal.com.cn)

## Product Information

### Source

Rabbit

### Isotype

IgG

### Purification

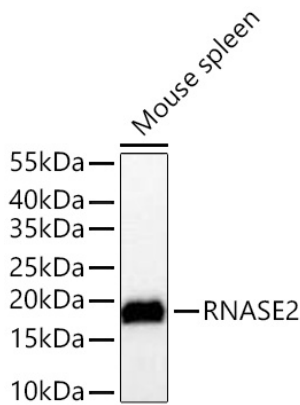
Affinity purification

### Storage

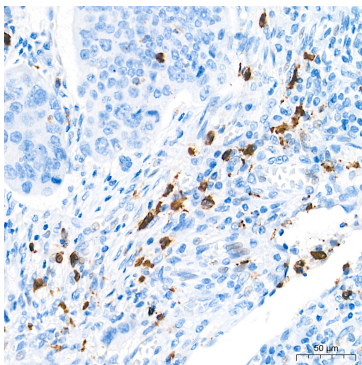
Store at -20°C. Avoid freeze / thaw cycles.

Buffer: PBS with 0.09% Sodium azide, 50% glycerol, pH7.3.

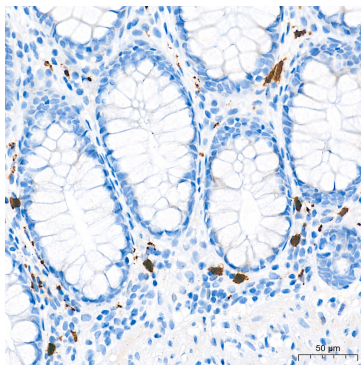
## Validation Data



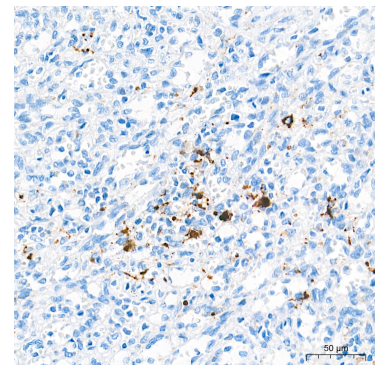
Western blot analysis of lysates from Mouse spleen using RNASE2 Rabbit pAb (A28007) at 1:3000 dilution incubated at room temperature for 1.5 hours.  
Secondary antibody: HRP-conjugated Goat anti-Rabbit IgG (H+L) (AS014) at 1:10000 dilution.  
Lysates/proteins: 25 µg per lane.  
Blocking buffer: 3% nonfat dry milk in TBST.  
Detection: ECL Basic Kit (RM00020).  
Exposure time: 10s.



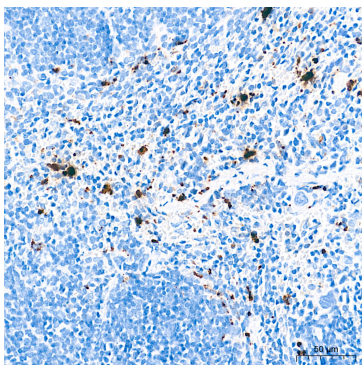
Immunohistochemistry analysis of paraffin-embedded Human colon carcinoma tissue using RNASE2 Rabbit pAb (A28007) at a dilution of 1:500 (40x lens). High pressure antigen retrieval performed with 0.01M Tris-EDTA Buffer (pH 9.0) prior to IHC staining.



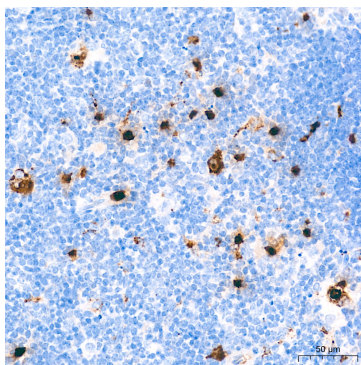
Immunohistochemistry analysis of paraffin-embedded Human colon tissue using RNASE2 Rabbit pAb (A28007) at a dilution of 1:500 (40x lens). High pressure antigen retrieval performed with 0.01M Tris-EDTA Buffer (pH 9.0) prior to IHC staining.



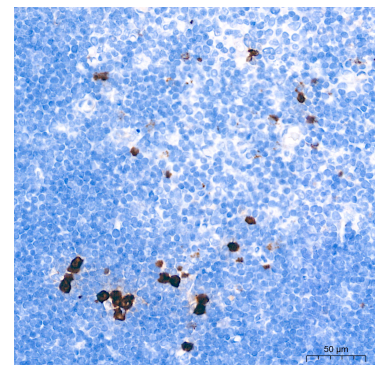
Immunohistochemistry analysis of paraffin-embedded Human spleen tissue using RNASE2 Rabbit pAb (A28007) at a dilution of 1:500 (40x lens). High pressure antigen retrieval performed with 0.01M Tris-EDTA Buffer (pH 9.0) prior to IHC staining.



Immunohistochemistry analysis of paraffin-embedded Mouse spleen tissue using RNASE2 Rabbit pAb (A28007) at a dilution of 1:500 (40x lens). High pressure antigen retrieval performed with 0.01M Tris-EDTA Buffer (pH 9.0) prior to IHC staining.



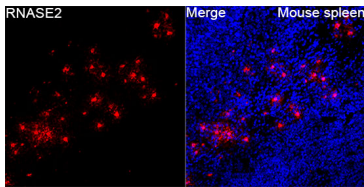
Immunohistochemistry analysis of paraffin-embedded Mouse thymus tissue using RNASE2 Rabbit pAb (A28007) at a dilution of 1:500 (40x lens). High pressure antigen retrieval performed with 0.01M Tris-EDTA Buffer (pH 9.0) prior to IHC staining.



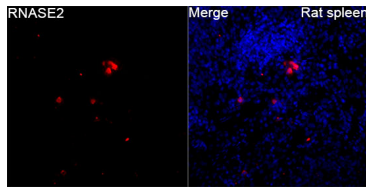
Immunohistochemistry analysis of paraffin-embedded Rat thymus tissue using RNASE2 Rabbit pAb (A28007) at a dilution of 1:500 (40x lens). High pressure antigen retrieval performed with 0.01M Tris-EDTA Buffer (pH 9.0) prior to IHC staining.

## Validation Data

---



Immunofluorescence analysis of Mouse spleen tissue using RNASE2 Rabbit pAb (A28007) at a dilution of 1:200 (40x lens). Secondary antibody: Cy3-conjugated Goat anti-Rabbit IgG (H+L)(AS007) at 1:500 dilution. Blue: DAPI for nuclear staining. High pressure antigen retrieval performed with 0.01M Citrate Buffer (pH 6.0) prior to IF staining.



Immunofluorescence analysis of Rat spleen tissue using RNASE2 Rabbit pAb (A28007) at a dilution of 1:200 (40x lens). Secondary antibody: Cy3-conjugated Goat anti-Rabbit IgG (H+L)(AS007) at 1:500 dilution. Blue: DAPI for nuclear staining. High pressure antigen retrieval performed with 0.01M Citrate Buffer (pH 6.0) prior to IF staining.