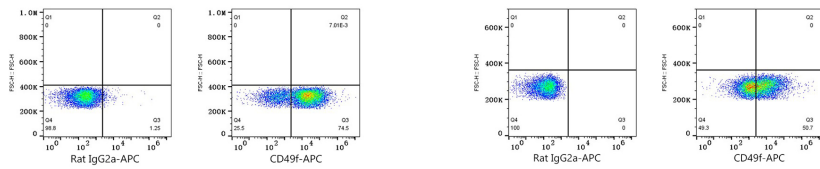


Validation Data



Flow cytometry: 1×10^6 Human PBMC were surface-stained with APC Rat IgG2a isotype control (5 μ l/Test,left) or APC Rat anti-Mouse CD49f mAb (A28013,0.5 μ g,right). Cells in the lymphocyte gate were used for analysis.

Flow cytometry: 1×10^6 C57BL/6 mouse splenocytes were surface-stained with APC Rat IgG2a isotype control (5 μ l/Test,left) or APC Rat anti-Mouse CD49f mAb (A28013,0.5 μ g,right).