

# APC Rabbit anti-Human/Monkey CD10 mAb

Catalog No.: A28034

## Basic Information

### Observed MW

### Calculated MW

86kDa

### Category

Primary antibody

### Applications

FC

### Cross-Reactivity

Human, Cynomolgus

### CloneNo number

ARC73991

### Conjugate

APC. Ex:650nm. Em:660nm.

## Recommended Dilutions

FC 5  $\mu$ l per  $10^6$  cells in  
100  $\mu$ l volume

## Background

The protein encoded by this gene is a type II transmembrane glycoprotein and a common acute lymphocytic leukemia antigen that is an important cell surface marker in the diagnosis of human acute lymphocytic leukemia (ALL). The encoded protein is present on leukemic cells of pre-B phenotype, which represent 85% of cases of ALL. This protein is not restricted to leukemic cells, however, and is found on a variety of normal tissues. The protein is a neutral endopeptidase that cleaves peptides at the amino side of hydrophobic residues and inactivates several peptide hormones including glucagon, enkephalins, substance P, neurotensin, oxytocin, and bradykinin.

## Immunogen Information

### Gene ID

4311

### Swiss Prot

P08473

### Immunogen

Recombinant protein (or fragment). This information is considered to be commercially sensitive.

### Synonyms

NEP; SFE; CD10; CALLA; CMT2T; SCA43

## Contact

☎ | 400-999-6126

✉ | [cn.market@abclonal.com.cn](mailto:cn.market@abclonal.com.cn)

🌐 | [www.abclonal.com.cn](http://www.abclonal.com.cn)

## Product Information

### Source

Rabbit

### Isotype

IgG

### Purification

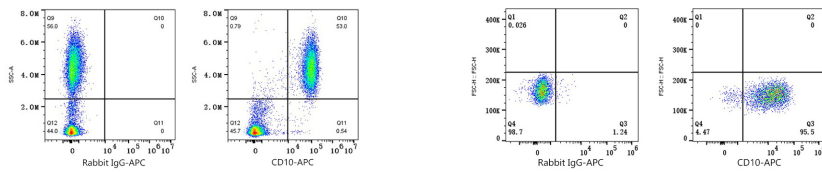
Affinity purification

### Storage

Store at 2-8°C. Avoid freeze.

Buffer: PBS with 0.09% Sodium azide, 0.2% BSA, pH7.3.

## Validation Data



Flow cytometry:  $1 \times 10^6$  Human peripheral blood leukocytes were surface-stained with APC Rabbit IgG isotype control (A24173,5  $\mu\text{l}/\text{Test}$ ,left) or APC Rabbit anti-Human CD10 mAb (A28034,5  $\mu\text{l}/\text{Test}$ ,right).

Flow cytometry:  $1 \times 10^6$  Cynomolgus peripheral blood mononuclear cells were surface-stained with APC Rabbit IgG isotype control (A24173,5  $\mu\text{l}/\text{Test}$ ,left) or APC Rabbit anti-Human/Monkey CD10 mAb (A28034,5  $\mu\text{l}/\text{Test}$ ,right). Cells in the granulocytes gate were used for analysis.