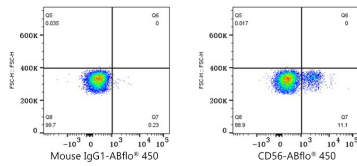




## Validation Data

---



Flow cytometry:  $1 \times 10^6$  Human PBMC were surface-stained with ABflo® 450 Mouse IgG1 isotype control (A28040, 0.5  $\mu\text{g}$ , left) or ABflo® 450 Mouse anti-Human CD56 mAb (A26642, 0.5  $\mu\text{g}$ , right). Cells in the lymphocyte gate were used for analysis.