

# ADRA2A Rabbit pAb

Catalog No.: A2809 **3 Publications**

## Basic Information

**Observed MW**

49 kDa

**Calculated MW**

51 kDa

**Category**

Primary antibody

**Applications**

WB, ELISA

**Cross-Reactivity**

Human, Mouse

## Background

Alpha-2-adrenergic receptors are members of the G protein-coupled receptor superfamily. The alpha-2-adrenergic receptors are a type of adrenergic receptors (for adrenaline or epinephrine), which inhibit adenylate cyclase. These receptors include 3 highly homologous subtypes: alpha2A, alpha2B, and alpha2C. They are involved in regulating the release of neurotransmitter molecules from sympathetic nerves and from adrenergic neurons in the central nervous system. The sympathetic nervous system regulates cardiovascular function by activating adrenergic receptors in the heart, blood vessels and kidney. Studies in mouse revealed that both the alpha2A and alpha2C receptor subtypes were required for presynaptic transmitter release from the sympathetic nervous system in the heart and from central noradrenergic neurons. The alpha-2-adrenergic receptors are also involved in catecholamine signaling by extracellular regulated protein kinase 1 and 2 (ERK1/2) pathways. A clear association between the alpha-2-adrenergic receptor and disease has not been yet established.

## Recommended Dilutions

**WB** 1:500 - 1:2000**ELISA** Recommended starting concentration is 1 µg/mL. Please optimize the concentration based on your specific assay requirements.

## Immunogen Information

**Gene ID**

150

**Swiss Prot**

P08913

**Immunogen**

Recombinant protein (or fragment). This information is considered to be commercially sensitive.

**Synonyms**

ADRA2; ADRAR; ZNF32; ADRA2R; ALPHA2AAR; ADRA2A

## Contact

 | 400-999-6126 | [cn.market@abclonal.com.cn](mailto:cn.market@abclonal.com.cn) | [www.abclonal.com.cn](http://www.abclonal.com.cn)

## Product Information

**Source**

Rabbit

**Isotype**

IgG

**Purification**

Affinity purification

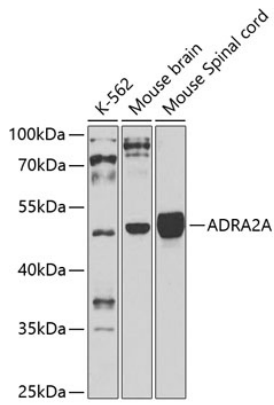
**Storage**

Store at -20°C. Avoid freeze / thaw cycles.

Buffer: PBS containing 50% glycerol, preserved with proclin300 or sodium azide (as specified on the Certificate of Analysis), pH 7.3.

## Validation Data

---



Western blot analysis of various lysates using ADRA2A Rabbit pAb (A2809) at 1:1000 dilution.  
Secondary antibody: HRP-conjugated Goat anti-Rabbit IgG (H+L) (AS014) at 1:10000 dilution.  
Lysates/proteins: 25µg per lane.  
Blocking buffer: 3% nonfat dry milk in TBST.  
Detection: ECL Basic Kit (RM00020).  
Exposure time: 30s.