

PE Rabbit anti-Human CD221 α /IGF-1R α mAb

Catalog No.: A28122

Basic Information

Observed MW

Calculated MW

155kDa

Category

Primary antibody

Applications

FC

Cross-Reactivity

Human

CloneNo number

ARC76079

Conjugate

PE. Ex:565nm. Em:574nm.

Background

This receptor binds insulin-like growth factor with a high affinity. It has tyrosine kinase activity. The insulin-like growth factor I receptor plays a critical role in transformation events. Cleavage of the precursor generates alpha and beta subunits. It is highly overexpressed in most malignant tissues where it functions as an anti-apoptotic agent by enhancing cell survival. Alternatively spliced transcript variants encoding distinct isoforms have been found for this gene.

Recommended Dilutions

FC 5 μ l per 10^6 cells in
100 μ l volume

Immunogen Information

Gene ID

3480

Swiss Prot

P08069

Immunogen

Recombinant protein (or fragment). This information is considered to be commercially sensitive.

Synonyms

IGFR; CD221; IGFIR; JTK13

Contact

☎ | 400-999-6126

✉ | cn.market@abclonal.com.cn

🌐 | www.abclonal.com.cn

Product Information

Source

Rabbit

Isotype

IgG

Purification

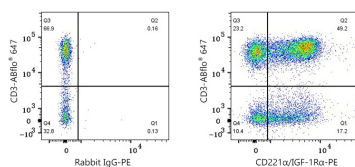
Affinity purification

Storage

Store at 2-8°C. Avoid freeze.

Buffer: PBS with 0.09% Sodium azide, 0.2% BSA, pH7.3.

Validation Data



Flow cytometry: 1X10⁶ C57BL/6 mouse splenocytes were surface-stained with ABflo® 647 Rabbit anti-Human/Monkey CD3 mAb (A26284, 5 µl/Test) and PE Rabbit IgG isotype control (A24172, 5 µl/Test, left) or PE Rabbit anti-Human CD221α/IGF-1Rα mAb (A28122, 5 µl/Test, right). Cells in the lymphocyte gate were used for analysis.