

[KO Validated] DBI Rabbit PolymAb®

Catalog No.: A28141PM **KO Validated**

Basic Information

Observed MW

12 kDa

Calculated MW

10-12 kDa

Category

Primary antibody

Applications

WB,IP,IHC-P,ELISA

Cross-Reactivity

Human, Mouse, Rat

Background

This gene encodes diazepam binding inhibitor, a protein that is regulated by hormones and is involved in lipid metabolism and the displacement of beta-carbolines and benzodiazepines, which modulate signal transduction at type A gamma-aminobutyric acid receptors located in brain synapses. The protein is conserved from yeast to mammals, with the most highly conserved domain consisting of seven contiguous residues that constitute the hydrophobic binding site for medium- and long-chain acyl-Coenzyme A esters. Diazepam binding inhibitor is also known to mediate the feedback regulation of pancreatic secretion and the postprandial release of cholecystokinin, in addition to its role as a mediator in corticotropin-dependent adrenal steroidogenesis. Three pseudogenes located on chromosomes 6, 8 and 16 have been identified. Multiple transcript variants encoding different isoforms have been described for this gene.

Recommended Dilutions

WB 1:2000 - 1:10000

IP 0.5 µg - 4 µg antibody for
200 µg - 400 µg extracts
of whole cells

IHC-P 1:1000 - 1:4000

ELISA Recommended starting concentration is 1 µg/mL. Please optimize the concentration based on your specific assay requirements. For high-ratio antibody dilutions ($\geq 1:10000$) a sequential dilution method is strongly recommended to ensure measurement accuracy.

Immunogen Information

Gene ID

1622/13167

Swiss Prot

P07108/P31786

Immunogen

Recombinant protein (or fragment). This information is considered to be commercially sensitive.

Synonyms

EP; ACBP; ACBD1; CCK-RP; endozeptine

Product Information

Source

Rabbit

Isotype

IgG

Purification

Affinity purification

Storage

Store at -20°C. Avoid freeze / thaw cycles.

Buffer: PBS with 0.09% Sodium azide, 0.05% BSA, 50% glycerol, pH7.3.

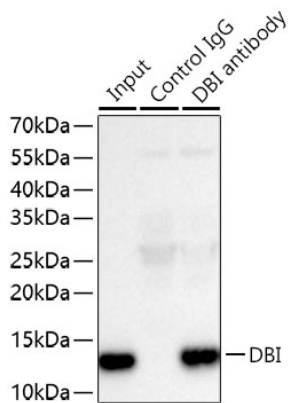
Contact

 | 400-999-6126

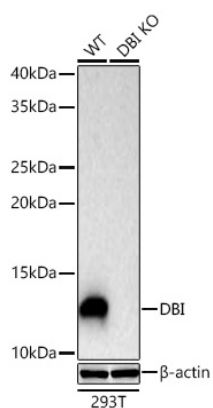
 | cn.market@abclonal.com.cn

 | www.abclonal.com.cn

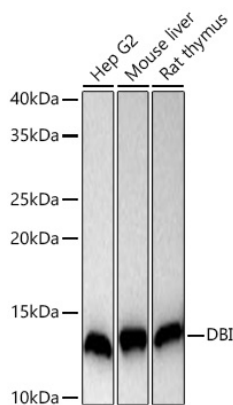
Validation Data



Immunoprecipitation of DBI from 300 µg extracts of Mouse liver tissue was performed using 2 µg of [KO Validated] DBI Rabbit PolymAb® (A28141PM). Rabbit Control IgG (AC005) was used to precipitate the Control IgG sample. IP samples were eluted with 1x Laemmli Buffer. The Input lane represents 10% of the total input. Western blot analysis of immunoprecipitates was conducted using [KO Validated] DBI Rabbit PolymAb® (A28141PM) at a dilution of 1:5000.

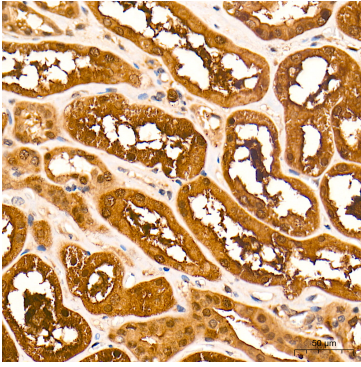


Western blot analysis of lysates from wild type (WT) and DBI knockout (KO) 293T cells using [KO Validated] DBI Rabbit PolymAb® (A28141PM) at 1:5000 dilution incubated at room temperature for 1.5 hours.
Secondary antibody: HRP-conjugated Goat anti-Rabbit IgG (H+L) (AS014) at 1:10000 dilution.
Lysates/proteins: 25 µg per lane.
Blocking buffer: 3% nonfat dry milk in TBST.
Detection: ECL Basic Kit (RM00020).
Exposure time: 20 s.

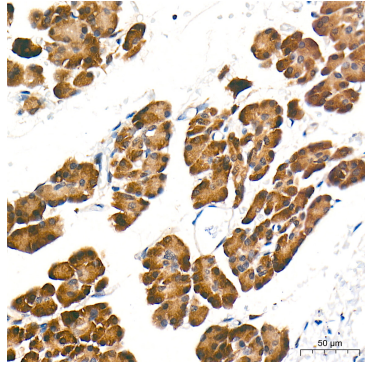


Western blot analysis of various lysates using [KO Validated] DBI Rabbit PolymAb® (A28141PM) at 1:5000 dilution incubated at room temperature for 1.5 hours.
Secondary antibody: HRP-conjugated Goat anti-Rabbit IgG (H+L) (AS014) at 1:10000 dilution.
Lysates/proteins: 25 µg per lane.
Blocking buffer: 3% nonfat dry milk in TBST.
Detection: ECL Basic Kit (RM00020).
Exposure time: 20 s.

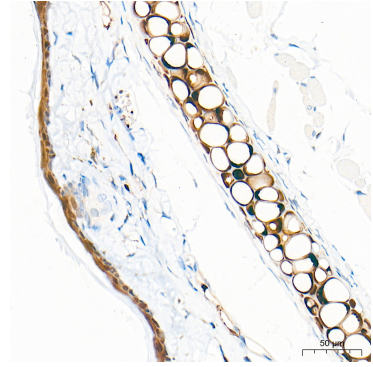
Validation Data



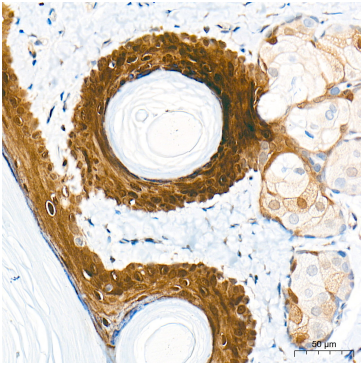
Immunohistochemistry analysis of paraffin-embedded Human kidney tissue using [KO Validated] DBI Rabbit PolymAb® (A28141PM) at a dilution of 1:2000 (40x lens). High pressure antigen retrieval performed with 0.01M Tris-EDTA Buffer (pH 9.0) prior to IHC staining.



Immunohistochemistry analysis of paraffin-embedded Human pancreas tissue using [KO Validated] DBI Rabbit PolymAb® (A28141PM) at a dilution of 1:2000 (40x lens). High pressure antigen retrieval performed with 0.01M Tris-EDTA Buffer (pH 9.0) prior to IHC staining.



Immunohistochemistry analysis of paraffin-embedded Mouse skin tissue using [KO Validated] DBI Rabbit PolymAb® (A28141PM) at a dilution of 1:2000 (40x lens). High pressure antigen retrieval performed with 0.01M Tris-EDTA Buffer (pH 9.0) prior to IHC staining.



Immunohistochemistry analysis of paraffin-embedded Rat skin tissue using [KO Validated] DBI Rabbit PolymAb® (A28141PM) at a dilution of 1:2000 (40x lens). High pressure antigen retrieval performed with 0.01M Tris-EDTA Buffer (pH 9.0) prior to IHC staining.