

NLRP3 Rabbit mAb

Catalog No.: A28144 **Recombinant**

Basic Information

Observed MW

118 kDa

Calculated MW

118 kDa

Category

Primary antibody

Applications

WB,IP,ELISA

Cross-Reactivity

Human

CloneNo number

ARC76151

Background

This gene encodes a pyrin-like protein containing a pyrin domain, a nucleotide-binding site (NBS) domain, and a leucine-rich repeat (LRR) motif. This protein interacts with the apoptosis-associated speck-like protein PYCARD/ASC, which contains a caspase recruitment domain, and is a member of the NLRP3 inflammasome complex. This complex functions as an upstream activator of NF-kappaB signaling, and it plays a role in the regulation of inflammation, the immune response, and apoptosis. The SARS-CoV 3a protein, a transmembrane pore-forming viroporin, has been shown to activate the NLRP3 inflammasome via the formation of ion channels in macrophages. Mutations in this gene are associated with familial cold autoinflammatory syndrome (FCAS), Muckle-Wells syndrome (MWS), chronic infantile neurological cutaneous and articular (CINCA) syndrome, neonatal-onset multisystem inflammatory disease (NOMID), keratoendotheliitis fugax hereditarian, and deafness, autosomal dominant 34, with or without inflammation. Multiple alternatively spliced transcript variants encoding distinct isoforms have been identified for this gene. Alternative 5' UTR structures are suggested by available data; however, insufficient evidence is available to determine if all of the represented 5' UTR splice patterns are biologically valid.

Recommended Dilutions

WB 1:2000 - 1:5000

IP 0.5µg-4µg antibody for
500µg-700µg extracts of
whole cells

ELISA Recommended starting
concentration is 1 µg/mL.
Please optimize the
concentration based on
your specific assay
requirements. For high-
ratio antibody dilutions
(≥1:10000) a sequential
dilution method is
strongly recommended
to ensure measurement
accuracy.

Immunogen Information

Gene ID

114548

Swiss Prot

Q96P20

Immunogen

Recombinant protein (or fragment). This information is considered to be commercially sensitive.

Synonyms

All; AVP; FCU; MWS; FCAS; KEFH; CIAS1; FCAS1; NALP3; C1orf7; CLR1.1; DFNA34; PYPAF1; AGTAVPRL

Product Information

Source

Rabbit

Isotype

IgG

Purification

Affinity purification

Storage

Store at -20°C. Avoid freeze / thaw cycles.

Buffer: PBS with 0.09% Sodium azide, 0.05% BSA, 50% glycerol, pH7.3.

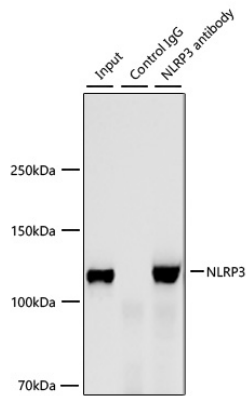
Contact

 | 400-999-6126

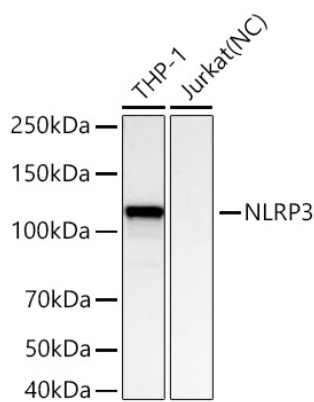
 | cn.market@abclonal.com.cn

 | www.abclonal.com.cn

Validation Data



Immunoprecipitation of NLRP3 from 600 μ g extracts of THP-1 cells was performed using 2 μ g of NLRP3 Rabbit mAb (A28144). Rabbit Control IgG (AC005) was used to precipitate the Control IgG sample. IP samples were eluted with 1 \times Laemmli Buffer. The Input lane represents 10% of the total input. Western blot analysis of immunoprecipitates was conducted using NLRP3 Rabbit mAb (A28144) at a dilution of 1:4000.



Western blot analysis of various lysates using NLRP3 Rabbit mAb (A28144) at 1:5000 dilution incubated overnight at 4°C. Secondary antibody: HRP-conjugated Goat anti-Rabbit IgG (H+L) (AS014) at 1:10000 dilution. Lysates/proteins: 30 μ g per lane. Blocking buffer: 3% nonfat dry milk in TBST. Detection: ECL Basic Kit (RM00020). Negative control (NC): Jurkat. Exposure time: 45 s.