

# PE Rabbit anti-Mouse CD122/IL-2R $\beta$ mAb

Catalog No.: A28145

## Basic Information

### Observed MW

### Calculated MW

60 kDa

### Category

Primary antibody

### Applications

FC

### Cross-Reactivity

Mouse

### CloneNo number

ARC76907

### Conjugate

PE. Ex:565nm. Em:574nm.

## Background

The interleukin 2 receptor is composed of alpha and beta subunits. The beta subunit encoded by this gene is very homologous to the human beta subunit and also shows structural similarity to other cytokine receptors.

## Recommended Dilutions

**FC**                       $\leq 0.25 \mu\text{g}$  per million cells  
in 100  $\mu\text{l}$  volume

## Immunogen Information

### Gene ID

16185

### Swiss Prot

P16297

### Immunogen

Recombinant protein (or fragment). This information is considered to be commercially sensitive.

### Synonyms

p70; CD122; IL15Rbeta; IL-2Rbeta; IL-15Rbeta; IL-2/15Rbeta

## Contact

 | 400-999-6126

 | [cn.market@abclonal.com.cn](mailto:cn.market@abclonal.com.cn)

 | [www.abclonal.com.cn](http://www.abclonal.com.cn)

## Product Information

### Source

Rabbit

### Isotype

IgG

### Purification

Affinity purification

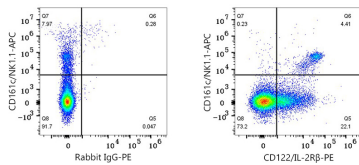
### Storage

Store at 2-8°C. Avoid freeze.

Buffer: PBS with 0.09% Sodium azide, 0.2% BSA, pH7.3.

## Validation Data

---



Flow cytometry:  $1 \times 10^6$  C57BL/6 mouse splenocytes were surface-stained with APC Rabbit anti-Mouse CD161c/NK1.1 mAb (A25913, 5  $\mu$ l/Test) and PE Rabbit IgG isotype control (A24172, 5  $\mu$ l/Test, left) or PE Rabbit anti-Mouse CD122/IL-2R $\beta$  mAb (A28145, 0.25  $\mu$ g, right).