

# Biotin Rabbit anti-Human/Monkey CD20 mAb

Catalog No.: A28155

## Basic Information

### Observed MW

### Calculated MW

14 kDa/33 kDa

### Category

Primary antibody

### Applications

FC

### Cross-Reactivity

Human, Cynomolgus

### CloneNo number

ARC51683

### Conjugate

Biotin

## Recommended Dilutions

FC ≤0.25 µg per million cells  
in 100 µl volume

## Background

This gene encodes a member of the membrane-spanning 4A gene family. Members of this nascent protein family are characterized by common structural features and similar intron/exon splice boundaries and display unique expression patterns among hematopoietic cells and nonlymphoid tissues. This gene encodes a B-lymphocyte surface molecule which plays a role in the development and differentiation of B-cells into plasma cells. This family member is localized to 11q12, among a cluster of family members. Alternative splicing of this gene results in two transcript variants which encode the same protein.

## Immunogen Information

### Gene ID

Hu 931 Cyon 102118491

### Swiss Prot

P11836

### Immunogen

Synthetic peptide. This information is considered to be commercially sensitive.

### Synonyms

B1; S7; Bp35; CD20; FMC7; CVID5; LEU-16

## Contact

 | 400-999-6126

 | [cn.market@abclonal.com.cn](mailto:cn.market@abclonal.com.cn)

 | [www.abclonal.com.cn](http://www.abclonal.com.cn)

## Product Information

### Source

Rabbit

### Isotype

IgG

### Purification

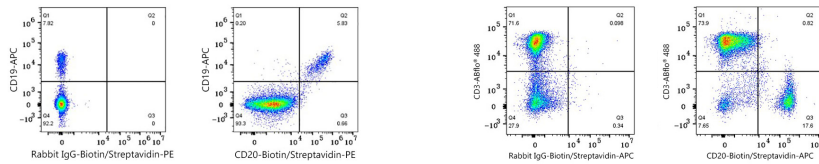
Affinity purification

### Storage

Store at 2-8°C. Avoid freeze.

Buffer: PBS with 0.09% Sodium azide, 0.2% BSA, pH7.3.

## Validation Data



Flow cytometry:  $1 \times 10^6$  Human PBMC were surface-stained with APC Rabbit anti-Human/Monkey CD19 mAb (A26220,5  $\mu$ l/Test) and Biotin Rabbit IgG isotype control (A25626,5  $\mu$ l/Test,left) or Biotin Rabbit anti-Human/Monkey CD20 mAb (A28155,0.25  $\mu$ g,right), followed by PE Streptavidin staining. Cells in the lymphocytes gate were used for analysis.

Flow cytometry:  $1 \times 10^6$  Cynomolgus PBMC were surface-stained with ABR@ 488 Rabbit anti-Human/Monkey CD3 mAb (A26283,5  $\mu$ l/Test) and Biotin Rabbit IgG isotype control (A25626,5  $\mu$ l/Test,left) or Biotin Rabbit anti-Human/Monkey CD20 mAb (A28155,0.25  $\mu$ g,right), followed by APC Streptavidin staining. Cells in the lymphocyte gate were used for analysis.