

Biotin Rabbit anti-Mouse CD4 mAb

Catalog No.: A28157

Basic Information

Observed MW

Calculated MW

51 kDa

Category

Primary antibody

Applications

FC

Cross-Reactivity

Mouse

CloneNo number

ARC64069

Conjugate

Biotin

Background

Predicted to enable several functions, including interleukin-16 binding activity; interleukin-16 receptor activity; and protein homodimerization activity. Involved in helper T cell enhancement of adaptive immune response. Acts upstream of or within several processes, including defense response to Gram-negative bacterium; positive regulation of calcium-mediated signaling; and positive regulation of peptidyl-tyrosine phosphorylation. Located in endoplasmic reticulum; external side of plasma membrane; and membrane raft. Is expressed in several structures, including alimentary system; brain; genitourinary system; hemolymphoid system; and liver and biliary system. Used to study type 1 diabetes mellitus. Human ortholog(s) of this gene implicated in immunodeficiency 79. Orthologous to human CD4 (CD4 molecule).

Recommended Dilutions

FC ≤0.25 µg per million cells
in 100 µl volume

Immunogen Information

Gene ID

12504

Swiss Prot

P06332

Immunogen

Recombinant protein (or fragment). This information is considered to be commercially sensitive.

Synonyms

L3T4; Ly-4

Contact

☎ | 400-999-6126

✉ | cn.market@abclonal.com.cn

🌐 | www.abclonal.com.cn

Product Information

Source

Rabbit

Isotype

IgG

Purification

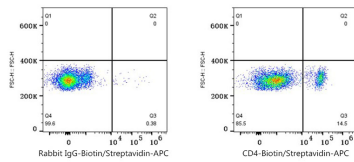
Affinity purification

Storage

Store at 2-8°C. Avoid freeze.

Buffer: PBS with 0.09% Sodium azide, 0.2% BSA, pH7.3.

Validation Data



Flow cytometry: 1×10^6 C57BL/6 mouse splenocytes were surface-stained with Biotin Rabbit IgG isotype control (A25626, 5 μ l/Test, left) or Biotin Rabbit anti-Mouse CD4 mAb (A28157, 0.25 μ g, right), followed by APC Streptavidin staining. Cells in the lymphocytes gate were used for analysis.