

APC Rabbit anti-Human Annexin A1/ANXA1 mAb

Catalog No.: A28160

Basic Information

Observed MW

Calculated MW

39 kDa

Category

Primary antibody

Applications

FC

Cross-Reactivity

Human

CloneNo number

ARC66904

Conjugate

APC. Ex:650nm. Em:660nm.

Background

This gene encodes a membrane-localized protein that binds phospholipids. This protein inhibits phospholipase A2 and has anti-inflammatory activity. Loss of function or expression of this gene has been detected in multiple tumors.

Recommended Dilutions

FC 5 μ l per 10^6 cells in
100 μ l volume

Immunogen Information

Gene ID

301

Swiss Prot

P04083

Immunogen

Recombinant protein (or fragment). This information is considered to be commercially sensitive.

Synonyms

ANX1; LPC1

Contact

 | 400-999-6126

 | cn.market@abclonal.com.cn

 | www.abclonal.com.cn

Product Information

Source

Rabbit

Isotype

IgG

Purification

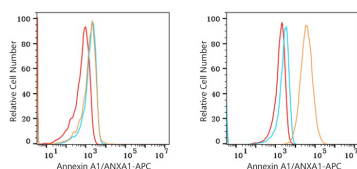
Affinity purification

Storage

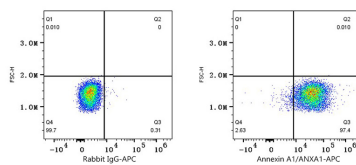
Store at 2-8°C. Avoid freeze.

Buffer: PBS with 0.09% Sodium azide, 0.2% BSA, pH7.3.

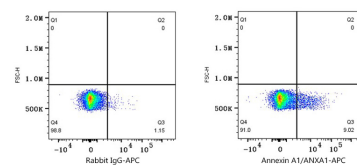
Validation Data



Flow cytometry: 1×10^6 293T cells (negative control, left) and A549 cells (right) were surface-stained with APC Rabbit anti-Human Annexin A1/ANXA1 mAb (A28160, 5 µl/Test, orange line) or APC Rabbit IgG isotype control (A24173, 5 µl/Test, blue line). Non-fluorescently stained cells were used as blank control (red line).



Flow cytometry: 1×10^6 A549 were surface-stained with APC Rabbit IgG isotype control (A24173, 5 µl/Test, left) or APC Rabbit anti-Human Annexin A1/ANXA1 mAb (A28160, 5 µl/Test, right).



Flow cytometry: 1×10^6 Human PBMC were surface-stained with APC Rabbit IgG isotype control (A24173, 5 µl/Test, left) or APC Rabbit anti-Human Annexin A1/ANXA1 mAb (A28160, 5 µl/Test, right). Cells in the lymphocyte gate were used for analysis.