

# APC Rabbit anti-Mouse F4/80 mAb

Catalog No.: A28171

## Basic Information

### Observed MW

### Calculated MW

102 kDa

### Category

Primary antibody

### Applications

FC

### Cross-Reactivity

Mouse

### CloneNo number

ARC74998

### Conjugate

APC. Ex:650nm. Em:660nm.

## Background

Predicted to enable G protein-coupled receptor activity. Predicted to be involved in adenylate cyclase-activating G protein-coupled receptor signaling pathway. Predicted to act upstream of or within G protein-coupled receptor signaling pathway and adaptive immune response. Located in external side of plasma membrane. Is expressed in several structures, including cardiovascular system; central nervous system; genitourinary system; hemolymphoid system; and intestine. Orthologous to human ADGRE1 (adhesion G protein-coupled receptor E1).

## Recommended Dilutions

FC  $\leq 0.25 \mu\text{g}$  per million cells  
in 100  $\mu\text{l}$  volume

## Immunogen Information

### Gene ID

13733

### Swiss Prot

Q61549

### Immunogen

Recombinant protein (or fragment). This information is considered to be commercially sensitive.

### Synonyms

Emr1; Ly71; F4/80; Gpf480; TM7LN3; DD7A5-7; EGF-TM7

## Contact

☎ | 400-999-6126

✉ | [cn.market@abclonal.com.cn](mailto:cn.market@abclonal.com.cn)

🌐 | [www.abclonal.com.cn](http://www.abclonal.com.cn)

## Product Information

### Source

Rabbit

### Isotype

IgG

### Purification

Affinity purification

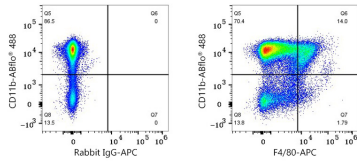
### Storage

Store at 2-8°C. Avoid freeze.

Buffer: PBS with 0.09% Sodium azide, 0.2% BSA, pH7.3.

## Validation Data

---



Flow cytometry:  $1 \times 10^6$  C57BL/6 mouse bone marrow cells were surface-stained with ABflo® 488 Rabbit anti-Mouse CD11b mAb (A24094, 5  $\mu$ l/Test) and APC Rabbit IgG isotype control (A24173, 5  $\mu$ l/Test, left) or APC Rabbit anti-Mouse F4/80 mAb (A28171, 0.25  $\mu$ g, right).