

# APC Rabbit pAb

Catalog No.: A2818 **2 Publications**

## Basic Information

### Observed MW

150kDa

### Calculated MW

312kDa

### Category

Primary antibody

### Applications

ELISA, WB, IHC-P, IF/ICC

### Cross-Reactivity

Human, Mouse, Rat

## Background

This gene encodes a tumor suppressor protein that acts as an antagonist of the Wnt signaling pathway. It is also involved in other processes including cell migration and adhesion, transcriptional activation, and apoptosis. Defects in this gene cause familial adenomatous polyposis (FAP), an autosomal dominant pre-malignant disease that usually progresses to malignancy. Mutations in the APC gene have been found to occur in most colorectal cancers, where disease-associated mutations tend to be clustered in a small region designated the mutation cluster region (MCR) and result in a truncated protein product.

## Recommended Dilutions

<b>WB</b>	1:500 - 1:1000
<b>IHC-P</b>	1:50 - 1:200
<b>IF/ICC</b>	1:50 - 1:200

## Immunogen Information

### Gene ID

324

### Swiss Prot

P25054

### Immunogen

Recombinant fusion protein containing a sequence corresponding to amino acids 2600-2760 of human APC (NP\_000029.2).

### Synonyms

GS; DP2; DP3; BTPS2; DESMD; DP2.5; PPP1R46; APC

## Contact

☎ | 400-999-6126

✉ | [cn.market@abclonal.com.cn](mailto:cn.market@abclonal.com.cn)

🌐 | [www.abclonal.com.cn](http://www.abclonal.com.cn)

## Product Information

### Source

Rabbit

### Isotype

IgG

### Purification

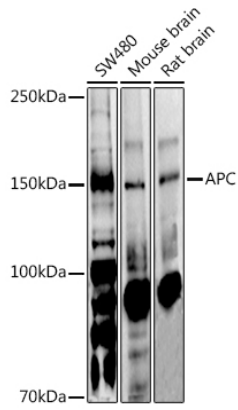
Affinity purification

### Storage

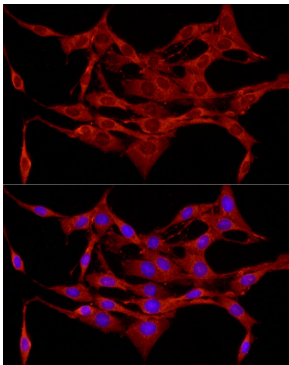
Store at -20°C. Avoid freeze / thaw cycles.

Buffer: PBS with 0.05% proclin300, 50% glycerol, pH7.3.

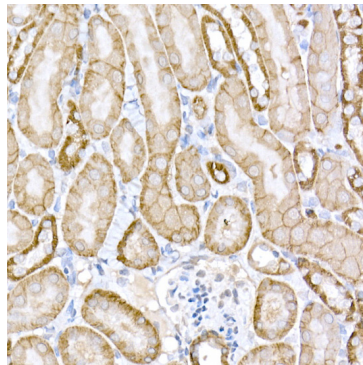
## Validation Data



Western blot analysis of various lysates using APC Rabbit pAb (A2818) at 1:1000 dilution.  
Secondary antibody: HRP Goat Anti-Rabbit IgG (H+L) (AS014) at 1:10000 dilution.  
Lysates/proteins: 25µg per lane.  
Blocking buffer: 3% nonfat dry milk in TBST.  
Detection: ECL Basic Kit (RM00020).  
Exposure time: 180s.



Immunofluorescence analysis of PC-12 cells using APC Rabbit pAb (A2818) at dilution of 1:100. Secondary antibody: Cy3 Goat Anti-Rabbit IgG (H+L) (AS007) at 1:500 dilution. Blue: DAPI for nuclear staining.



Immunohistochemistry analysis of paraffin-embedded mouse kidney using APC Rabbit pAb (A2818) at dilution of 1:100 (40x lens). Perform high pressure antigen retrieval with 10 mM citrate buffer pH 6.0 before commencing with IHC staining protocol.