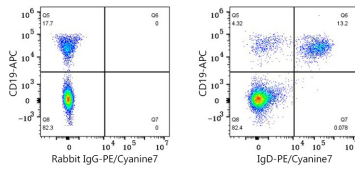
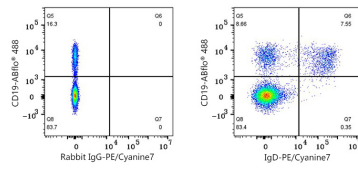


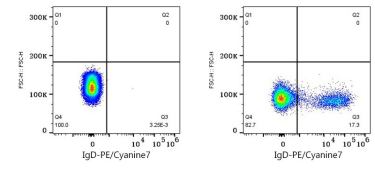
Validation Data



Flow cytometry: 1×10^6 Cynomolgus PBMC were surface-stained with APC Rabbit anti-Human/Monkey CD19 mAb (A26220, 5 μ l/Test) and PE/Cyanine7 Rabbit IgG isotype control (5 μ l/Test, left) or PE/Cyanine7 Rabbit anti-NHP IgD mAb (A28182, 0.25 μ g, right). Cells in the lymphocyte gate were used for analysis.



Flow cytometry: 1×10^6 Rhesus PBMC were surface-stained with ABflo® 450 Mouse anti-Human CD11b mAb (A27475, 5 μ l/Test), ABflo® 488 Rabbit anti-Human/Monkey CD19 mAb (A23008, 5 μ l/Test) and PE/Cyanine7 Rabbit IgG isotype control (5 μ l/Test, left) or PE/Cyanine7 Rabbit anti-NHP IgD mAb (A28182, 0.25 μ g, right). Cells in the CD11b- gate were used for analysis.



Flow cytometry: 1×10^6 Human peripheral blood mononuclear cells (negative control, left) and Cynomolgus peripheral blood mononuclear cells (right) were surface-stained with PE/Cyanine7 Rabbit anti-NHP IgD mAb (A28182, 0.25 μ g, right). Cells in the lymphocyte gate were used for analysis.