

RhoB Rabbit pAb

Catalog No.: A2819 **2 Publications**

Basic Information

Observed MW

21kDa

Calculated MW

22kDa

Category

Primary antibody

Applications

ELISA, WB

Cross-Reactivity

Human, Mouse, Rat

Background

Predicted to enable GTP binding activity; GTPase activity; and protein kinase binding activity. Involved in several processes, including cellular response to hydrogen peroxide; cellular response to ionizing radiation; and regulation of cell migration. Located in cleavage furrow and endosome membrane. Biomarker of breast cancer.

Recommended Dilutions

WB 1:500 - 1:1000

Immunogen Information

Gene ID

388

Swiss Prot

P62745

Immunogen

A synthetic peptide corresponding to a sequence within amino acids 100-190 of human RhoB (NP_004031.1).

Synonyms

ARH6; ARHB; RHOH6; MST081; MSTP081; RhoB

Contact

☎ | 400-999-6126

✉ | cn.market@abclonal.com.cn

🌐 | www.abclonal.com.cn

Product Information

Source

Rabbit

Isotype

IgG

Purification

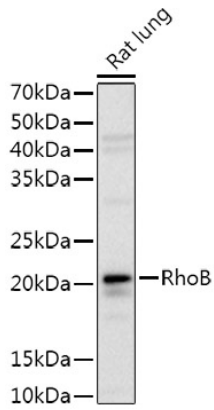
Affinity purification

Storage

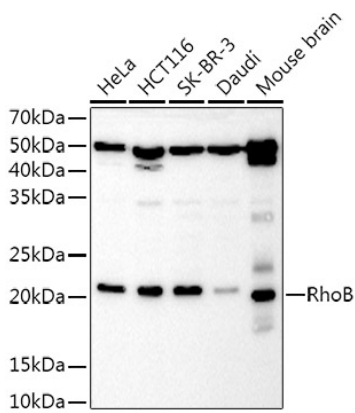
Store at -20°C. Avoid freeze / thaw cycles.

Buffer: PBS with 0.05% proclin300, 50% glycerol, pH7.3.

Validation Data



Western blot analysis of extracts of Rat lung, using RhoB Rabbit pAb antibody (A2819) at 1:1000 dilution.
Secondary antibody: HRP Goat Anti-Rabbit IgG (H+L) (AS014) at 1:10000 dilution.
Lysates/proteins: 25µg per lane.
Blocking buffer: 3% nonfat dry milk in TBST.
Detection: ECL Basic Kit (RM00020).
Exposure time: 3s.



Western blot analysis of extracts of various cell lines, using RhoB Rabbit pAb antibody (A2819) at 1:1000 dilution.
Secondary antibody: HRP Goat Anti-Rabbit IgG (H+L) (AS014) at 1:10000 dilution.
Lysates/proteins: 25µg per lane.
Blocking buffer: 3% nonfat dry milk in TBST.
Detection: ECL Basic Kit (RM00020).
Exposure time: 10s.