

PE Rabbit anti-Human CD163 mAb

Catalog No.: A28196

Basic Information

Observed MW

Calculated MW

125 kDa

Category

Primary antibody

Applications

FC

Cross-Reactivity

Human

CloneNo number

ARC76502

Conjugate

PE. Ex:565nm. Em:574nm.

Background

The protein encoded by this gene is a member of the scavenger receptor cysteine-rich (SRCR) superfamily, and is exclusively expressed in monocytes and macrophages. It functions as an acute phase-regulated receptor involved in the clearance and endocytosis of hemoglobin/haptoglobin complexes by macrophages, and may thereby protect tissues from free hemoglobin-mediated oxidative damage. This protein may also function as an innate immune sensor for bacteria and inducer of local inflammation. Alternatively spliced transcript variants encoding different isoforms have been described for this gene.

Recommended Dilutions

FC 5 μ l per 10^6 cells in
100 μ l volume

Immunogen Information

Gene ID

9332

Swiss Prot

Q86VB7

Immunogen

Recombinant protein (or fragment). This information is considered to be commercially sensitive.

Synonyms

M130; MM130; SCAR11

Contact

☎ | 400-999-6126

✉ | cn.market@abclonal.com.cn

🌐 | www.abclonal.com.cn

Product Information

Source

Rabbit

Isotype

IgG

Purification

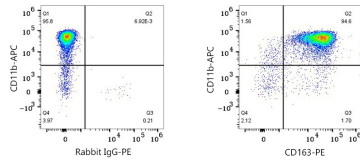
Affinity purification

Storage

Store at 2-8°C. Avoid freeze.

Buffer: PBS with 0.09% Sodium azide, 0.2% BSA, pH7.3.

Validation Data



Flow cytometry: 1X10⁶ Human PBMC were surface-stained with APC Mouse anti-Human CD11b (A26893,5 µl/Test) and PE Rabbit IgG isotype control (A24172,5 µl/Test,left) or PE Rabbit anti-Human CD163 mAb (A28196,5 µl/Test,right). Cells in the monocyte gate were used for analysis.