

# PE Rabbit anti-Mouse CD235a/Glycophorin A mAb

Catalog No.: A28200

## Basic Information

### Observed MW

### Calculated MW

18 kDa

### Category

Primary antibody

### Applications

FC

### Cross-Reactivity

Mouse

### CloneNo number

ARC75630

### Conjugate

PE. Ex:565nm. Em:574nm.

## Background

Enables identical protein binding activity. Acts upstream of or within regulation of response to osmotic stress. Located in external side of plasma membrane. Is expressed in liver and yolk sac. Human ortholog(s) of this gene implicated in malaria. Orthologous to several human genes including GYPA (glycophorin A (MNS blood group)).

## Recommended Dilutions

**FC** ≤0.5 µg per million cells  
in 100 µl volume

## Immunogen Information

### Gene ID

14934

### Swiss Prot

P14220

### Immunogen

Recombinant protein (or fragment). This information is considered to be commercially sensitive.

### Synonyms

GPA; CD235a

## Contact

 | 400-999-6126

 | [cn.market@abclonal.com.cn](mailto:cn.market@abclonal.com.cn)

 | [www.abclonal.com.cn](http://www.abclonal.com.cn)

## Product Information

### Source

Rabbit

### Isotype

IgG

### Purification

Affinity purification

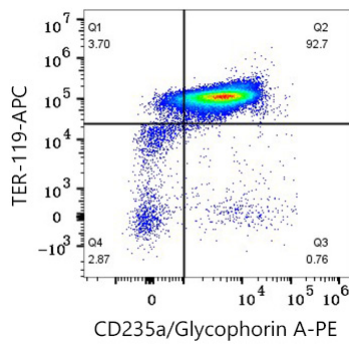
### Storage

Store at 2-8°C. Avoid freeze.

Buffer: PBS with 0.09% Sodium azide, 0.2% BSA, pH7.3.

## Validation Data

---



Flow cytometry:  $1 \times 10^6$  C57BL/6 bone marrow cells were surface-stained with ABflo® 450 Rabbit anti-Mouse CD45 mAb (A27197, 5  $\mu$ l/Test) and APC anti-Mouse TER-119 mAb (A25661, 5  $\mu$ l/Test) or PE Rabbit anti-Mouse CD235a/Glycophorin A mAb (A28200, 0.5  $\mu$ g). Cells in the CD45- gate are used for analysis.