

# ABflo® 610 Mouse anti-Human CD15/SSEA-1 mAb

Catalog No.: A28210

## Basic Information

### Observed MW

Refer to figures

### Calculated MW

59 kDa

### Category

Primary antibody

### Applications

FC

### Cross-Reactivity

Human

### CloneNo number

AMC10002R

### Conjugate

ABflo® 610. Ex:421nm. Em:612nm.

## Recommended Dilutions

**FC** 5 µl per 10<sup>6</sup> cells in  
100 µl volume

## Background

The product of this gene transfers fucose to N-acetylglucosamine polysaccharides to generate fucosylated carbohydrate structures. It catalyzes the synthesis of the non-sialylated antigen, Lewis x (CD15).

## Immunogen Information

### Gene ID

2526

### Swiss Prot

P22083

### Immunogen

Synthetic peptide. This information is considered to be commercially sensitive.

### Synonyms

LeX; CD15; ELFT; FCT3A; FUTIV; SSEA-1; FUC-TIV

## Contact

 | 400-999-6126

 | [cn.market@abclonal.com.cn](mailto:cn.market@abclonal.com.cn)

 | [www.abclonal.com.cn](http://www.abclonal.com.cn)

## Product Information

### Source

Mouse

### Isotype

IgM, κ

### Purification

Affinity purification

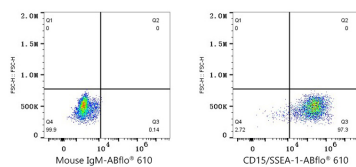
### Storage

Store at 2-8°C. Avoid freeze.

Buffer: PBS with 0.09% Sodium azide, 0.2% BSA, pH7.3.

## Validation Data

---



Flow cytometry: 1X10<sup>6</sup> Human peripheral blood granulocytes were surface-stained with ABflo® 610 Mouse IgM isotype control (5 µl/Test, left) or ABflo® 610 Mouse anti-Human CD15/SSEA-1 mAb (A28210, 5 µl/Test, right).