

PE Rabbit anti-Mouse CD206/MMR mAb

Catalog No.: A28215

Basic Information

Observed MW

Calculated MW

165 kDa

Category

Primary antibody

Applications

FC (intra),FC

Cross-Reactivity

Mouse

CloneNo number

ARC76673

Conjugate

PE. Ex:565nm. Em:574nm.

Recommended Dilutions

FC (intra) ≤0.25 µg per million cells
in 100 µl volume

Background

Macrophage Mannose Receptor (MMR), also known as MR, is designated CD206, MRC1 (Mannose Receptor C-type 1), or CLEC13D (C-type Lectin Domain Family 13 Member D) due to its presence on cells beyond macrophages. CD206 is a 175 kDa endocytic receptor expressed on M2 selectively activated tissue macrophages, including tumor-associated macrophages (TAMs), inflammatory dendritic cells in specific lymphoid organs, and liver, spleen, lymphatic, and dermal microvascular endothelial cells.

Immunogen Information

Gene ID

17533

Swiss Prot

Q61830

Immunogen

Recombinant protein (or fragment). This information is considered to be commercially sensitive.

Synonyms

MR; CD206

Contact

 | 400-999-6126

 | cn.market@abclonal.com.cn

 | www.abclonal.com.cn

Product Information

Source

Rabbit

Isotype

IgG

Purification

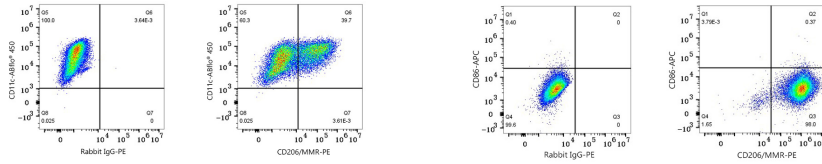
Affinity purification

Storage

Store at 2-8°C. Avoid freeze.

Buffer: PBS with 0.09% Sodium azide, 0.2% BSA, pH7.3.

Validation Data



Flow cytometry: 1×10^6 Immature C57BL/6 Bone Marrow-Derived Dendritic Cells were surface-stained with ABflo® 450 Armenian Hamster anti-Mouse CD11c mAb (A27804, 0.5 μ g), then intracellularly-stained with PE Rabbit IgG isotype control (A24172, 5 μ l/Test, left) or PE Rabbit anti-Mouse CD206/MMR mAb (A28215, 0.25 μ g, right).

Flow cytometry: 1×10^6 C57BL/6 Mouse Bone Marrow-Derived M2 Macrophages were surface-stained with APC Rabbit anti-Mouse CD86 mAb (A25824, 5 μ l/Test) and PE Rabbit IgG isotype control (A24172, 5 μ l/Test, left) or PE Rabbit anti-Mouse CD206/MMR mAb (A28215, 0.25 μ g, right).