

ABflo® 647 Rabbit anti-Mouse IFN-gamma mAb

Catalog No.: A28242

Basic Information

Observed MW

Calculated MW

18 kDa

Category

Primary antibody

Applications

FC (intra)

Cross-Reactivity

Mouse

CloneNo number

ARC69641

Conjugate

ABflo® 647. Ex:648nm. Em:664nm.

Background

This gene encodes a soluble cytokine that is a member of the type II interferon class. The encoded protein is secreted by cells of both the innate and adaptive immune systems. The active protein is a homodimer that binds to the interferon gamma receptor which triggers a cellular response to viral and microbial infections. Mice deficient in this gene have increased susceptibility to viral, bacterial and parasitic infections and to several autoimmune diseases.

Recommended Dilutions

FC (intra) ≤0.5 µg per million cells
 in 100 µl volume

Immunogen Information

Gene ID

15978

Swiss Prot

P01580

Immunogen

Recombinant protein (or fragment). This information is considered to be commercially sensitive.

Synonyms

Ifg; If2f; IFN-g

Contact

☎ | 400-999-6126

✉ | cn.market@abclonal.com.cn

🌐 | www.abclonal.com.cn

Product Information

Source

Rabbit

Isotype

IgG

Purification

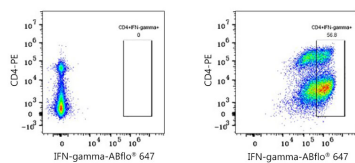
Affinity purification

Storage

Store at 2-8°C. Avoid freeze.

Buffer: PBS with 0.09% Sodium azide, 0.2% BSA, pH7.3.

Validation Data



Flow cytometry: 1X10⁶ C57BL/6 mouse splenocytes (untreated, left) and Th1-polarized C57BL/6 mouse splenocytes (treated with 50ng/ml PMA + 1ug/ml Ionomycin + 1ug/ml Brefeldin A or Monensin for 6 hours, right) were surface-stained with PE Rabbit anti-Mouse CD4 mAb (A25933, 5 µl/Test), then intracellularly-stained ABflo® 647 Rabbit anti-Mouse IFN-gamma mAb (A28242, 0.5 µg).