

SIRT6 Rabbit mAb

Catalog No.: A28245 **Recombinant**

Basic Information

Observed MW

36-42 kDa

Calculated MW

36 kDa/39 kDa

Category

Primary antibody

Applications

WB,IP,IF/ICC,IHC-P,ELISA

Cross-Reactivity

Human, Mouse, Rat

CloneNo number

ARC76352

Background

This gene encodes a member of the sirtuin family of NAD-dependent enzymes that are implicated in cellular stress resistance, genomic stability, aging and energy homeostasis. The encoded protein is localized to the nucleus, exhibits ADP-ribosyl transferase and histone deacetylase activities, and plays a role in DNA repair, maintenance of telomeric chromatin, inflammation, lipid and glucose metabolism. Alternative splicing results in multiple transcript variants encoding different isoforms.

Recommended Dilutions

WB 1:3000 - 1:6000

IP 0.5µg-4µg antibody for
200µg-400µg extracts of
whole cells

IF/ICC 1:100 - 1:200

IHC-P 1:200 - 1:800

ELISA Recommended starting concentration is 1 µg/mL. Please optimize the concentration based on your specific assay requirements. For high-ratio antibody dilutions (≥1:10000) a sequential dilution method is strongly recommended to ensure measurement accuracy.

Immunogen Information

Gene ID

51548

Swiss Prot

Q8N6T7

Immunogen

Recombinant protein (or fragment). This information is considered to be commercially sensitive.

Synonyms

SIR2L6; hSIRT6

Product Information

Source

Rabbit

Isotype

IgG

Purification

Affinity purification

Storage

Store at -20°C. Avoid freeze / thaw cycles.

Buffer: PBS with 0.09% Sodium azide, 0.05% BSA, 50% glycerol, pH7.3.

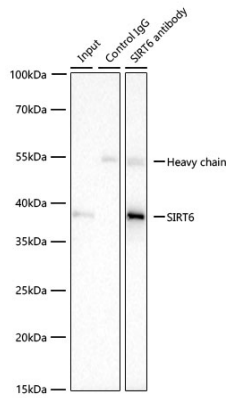
Contact

 | 400-999-6126

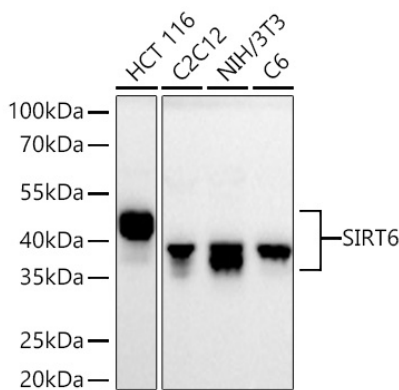
 | cn.market@abclonal.com.cn

 | www.abclonal.com.cn

Validation Data



Immunoprecipitation of SIRT6 from 300 µg extracts of C2C12 cells was performed using 1 µg of SIRT6 Rabbit mAb (A28245). Rabbit Control IgG (AC005) was used to precipitate the Control IgG sample. IP samples were eluted with 1x reducing Laemmli Buffer. The Input lane represents 10% of the total input. Western blot analysis of immunoprecipitates was conducted using SIRT6 Rabbit mAb (A28245) at a dilution of 1:5000.



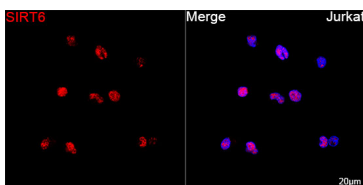
Western blot analysis of various lysates using SIRT6 Rabbit mAb (A28245) at 1:6000 dilution incubated overnight at 4°C.

Secondary antibody: HRP-conjugated Goat anti-Rabbit IgG (H+L) (AS014) at 1:10000 dilution. Lysates/proteins: 25 µg per lane.

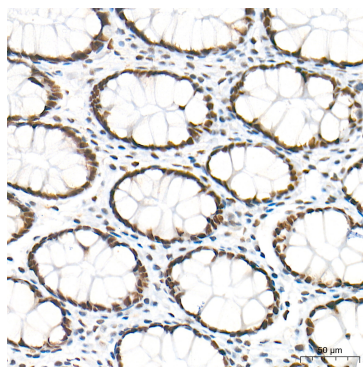
Blocking buffer: 3% nonfat dry milk in TBST.

Detection: ECL Basic Kit (RM00020).

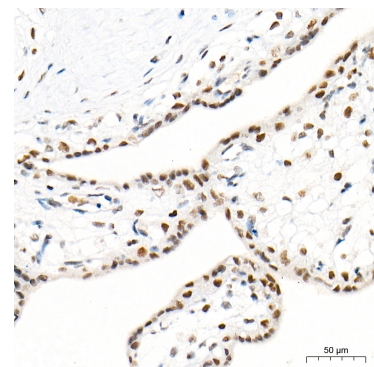
Exposure time: 90 s.



Confocal imaging of Jurkat cells using SIRT6 Rabbit mAb (A28245, dilution 1:200) followed by a further incubation with Cy3-conjugated Goat Anti-Rabbit IgG (H+L) (AS007, dilution 1:500) (Red). DAPI was used for nuclear staining (Blue). Objective: 100x.

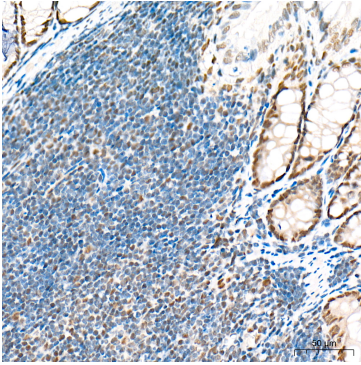


Immunohistochemistry analysis of paraffin-embedded Human colon tissue using SIRT6 Rabbit mAb (A28245) at a dilution of 1:600 (40x lens). High pressure antigen retrieval performed with 0.01M Tris-EDTA Buffer (pH 9.0) prior to IHC staining.

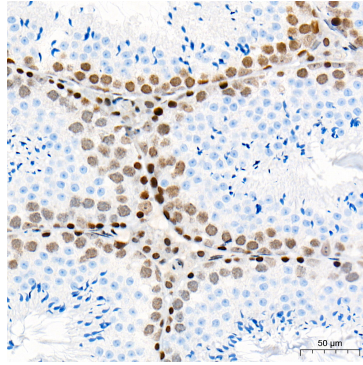


Immunohistochemistry analysis of paraffin-embedded Human placenta tissue using SIRT6 Rabbit mAb (A28245) at a dilution of 1:600 (40x lens). High pressure antigen retrieval performed with 0.01M Tris-EDTA Buffer (pH 9.0) prior to IHC staining.

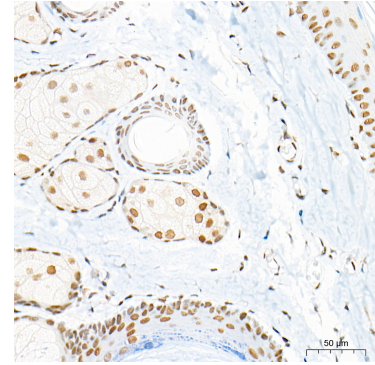
Validation Data



Immunohistochemistry analysis of paraffin-embedded Mouse colon tissue using SIRT6 Rabbit mAb (A28245) at a dilution of 1:600 (40x lens). High pressure antigen retrieval performed with 0.01M Tris-EDTA Buffer (pH 9.0) prior to IHC staining.



Immunohistochemistry analysis of paraffin-embedded Mouse testis tissue using SIRT6 Rabbit mAb (A28245) at a dilution of 1:600 (40x lens). High pressure antigen retrieval performed with 0.01M Tris-EDTA Buffer (pH 9.0) prior to IHC staining.



Immunohistochemistry analysis of paraffin-embedded Rat skin tissue using SIRT6 Rabbit mAb (A28245) at a dilution of 1:600 (40x lens). High pressure antigen retrieval performed with 0.01M Tris-EDTA Buffer (pH 9.0) prior to IHC staining.