

PE Rabbit anti-Human CD207/Langerin mAb

Catalog No.: A28251

Basic Information

Observed MW

Calculated MW

37kDa

Category

Primary antibody

Applications

FC

Cross-Reactivity

Human

CloneNo number

ARC77401

Conjugate

PE. Ex:565nm. Em:574nm.

Background

The protein encoded by this gene is expressed only in Langerhans cells which are immature dendritic cells of the epidermis and mucosa. It is localized in the Birbeck granules, organelles present in the cytoplasm of Langerhans cells and consisting of superimposed and zippered membranes. It is a C-type lectin with mannose binding specificity, and it has been proposed that mannose binding by this protein leads to internalization of antigen into Birbeck granules and providing access to a nonclassical antigen-processing pathway. Mutations in this gene result in Birbeck granules deficiency or loss of sugar binding activity.

Recommended Dilutions

FC 5 µl per 10⁶ cells in
100 µl volume

Immunogen Information

Gene ID

50489

Swiss Prot

Q9UJ71

Immunogen

Recombinant protein (or fragment). This information is considered to be commercially sensitive.

Synonyms

CLEC4K

Contact

☎ | 400-999-6126

✉ | cn.market@abclonal.com.cn

🌐 | www.abclonal.com.cn

Product Information

Source

Rabbit

Isotype

IgG

Purification

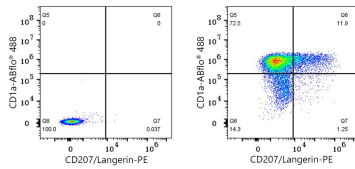
Affinity purification

Storage

Store at 2-8°C. Avoid freeze.

Buffer: PBS with 0.09% Sodium azide, 0.2% BSA, pH7.3.

Validation Data



Flow cytometry: 1×10^6 Human PBMC (untreated, left) and Human PBMC (treated with 100 ng/mL GM-CSF, 20 ng/mL IL-4, and 40 ng/mL TGF- β for 3 days, followed by an additional 3-day culture with GM-CSF and TGF- β , right) were surface-stained with ABflo® 488 Mouse anti-Human CD1a mAb (A26905, 5 μ l/Test) and PE Rabbit anti-Human CD207/Langerin mAb (A28251, 5 μ l/Test).