

TCR γ/δ Mouse mAb

Catalog No.: A28258

Basic Information

Observed MW

Calculated MW

19 kDa/20 kDa

Category

Primary antibody

Applications

FC

Cross-Reactivity

Human

CloneNo number

AMC10017

Background

The $\gamma\delta$ T-cell receptor (TCR) is a heterodimer composed of γ and δ chains, expressed on the surface of T cells and involved in antigen recognition. The engagement of $\gamma\delta$ TCR with antigen triggers phosphorylation of immunoreceptor tyrosine-based activation motifs (ITAMs) within the CD3 chains. Unlike $\alpha\beta$ T cells, human $\gamma\delta$ T cells recognize and kill transformed cells in an HLA-unrestricted manner. $\gamma\delta$ T lymphocytes develop primarily in the thymus, where their definitive receptor is generated through RAG-mediated rearrangement of a limited repertoire of variable (V), diversity (D), and joining (J) gene segments. In addition to the T-cell receptor, $\gamma\delta$ T cells often express activating natural killer (NK) receptors that bind to stress-induced surface molecules frequently expressed on malignant cells.

Recommended Dilutions

FC 5 μ l per 10^6 cells in
100 μ l volume

Immunogen Information

Gene ID

6964/6965

Swiss Prot

□

Immunogen

Recombinant protein (or fragment). This information is considered to be commercially sensitive.

Synonyms

Tcrdelta; TCRGV1S1; TCRGV2S1; TCRGV3S1; TCRGV5S3; TCRG; TRG@; TCRD; TRD@; TCRDV1

Contact

☎ | 400-999-6126

✉ | cn.market@abclonal.com.cn

🌐 | www.abclonal.com.cn

Product Information

Source

Mouse

Isotype

IgG

Purification

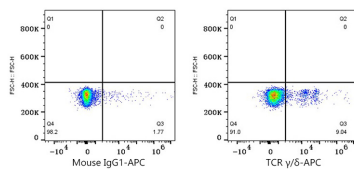
Affinity purification

Storage

Store at -20°C. Avoid freeze / thaw cycles.

Buffer: PBS with 0.09% Sodium azide, 0.05% BSA, 50% glycerol, pH7.3.

Validation Data



Flow cytometry: 1×10^6 Human PBMC were surface-stained with Mouse IgG 1 isotype control (2 $\mu\text{g/mL}$, left) or TCR γ/δ Mouse mAb (A28258, 2 $\mu\text{g/mL}$, right), followed by APC conjugated goat anti-Mouse pAb staining. Cells in the lymphocyte gate were used for analysis.