

# PE Rabbit anti-Mouse CD301b/MGL2 mAb

Catalog No.: A28266

## Basic Information

### Observed MW

Refer to figures

### Calculated MW

38 kDa

### Category

Primary antibody

### Applications

FC

### Cross-Reactivity

Mouse

### CloneNo number

ARC77414

### Conjugate

PE. Ex:565nm. Em:574nm.

## Recommended Dilutions

**FC** ≤0.5 µg per million cells  
in 100 µl volume

## Background

Enables carbohydrate binding activity. Predicted to be involved in immune response. Predicted to be active in external side of plasma membrane. Is expressed in several structures, including hemolymphoid system gland; ileum; liver; lung; and male reproductive gland or organ. Orthologous to human CLEC10A (C-type lectin domain containing 10A).

## Immunogen Information

### Gene ID

216864

### Swiss Prot

Q8JZN1

### Immunogen

Synthetic peptide. This information is considered to be commercially sensitive.

### Synonyms

CD301b

## Contact

 | 400-999-6126

 | [cn.market@abclonal.com.cn](mailto:cn.market@abclonal.com.cn)

 | [www.abclonal.com.cn](http://www.abclonal.com.cn)

## Product Information

### Source

Rabbit

### Isotype

IgG

### Purification

Affinity purification

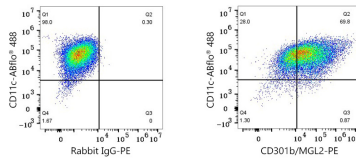
### Storage

Store at 2-8°C. Avoid freeze.

Buffer: PBS with 0.09% Sodium azide, 0.2% BSA, pH7.3.

## Validation Data

---



Flow cytometry: 1X10<sup>6</sup> C57BL/6 Bone Marrow-Derived Dendritic Cells were surface-stained with ABflo® 488 Armenian Hamster anti-Mouse CD11c mAb (A26927,5 µl/Test) and PE Rabbit IgG isotype control (A24172,5 µl/Test, left) or PE Rabbit anti-Mouse CD301b/MGL2 mAb (A28266,0.5 µg, right).