

PDE3A Rabbit pAb

Catalog No.: A28279

Basic Information

Observed MW

125 kDa

Calculated MW

125 kDa

Category

Primary antibody

Applications

WB,IP,ELISA

Cross-Reactivity

Mouse

Background

This gene encodes a member of the cGMP-inhibited cyclic nucleotide phosphodiesterase (cGI-PDE) family. cGI-PDE enzymes hydrolyze both cAMP and cGMP, and play critical roles in many cellular processes by regulating the amplitude and duration of intracellular cyclic nucleotide signals. The encoded protein mediates platelet aggregation and also plays important roles in cardiovascular function by regulating vascular smooth muscle contraction and relaxation. Inhibitors of the encoded protein may be effective in treating congestive heart failure. Alternatively spliced transcript variants encoding multiple isoforms have been observed for this gene.

Recommended Dilutions

WB 1:1000 - 1:2000

IP 0.5µg-4µg antibody for
200µg-400µg extracts of
whole cells

ELISA Recommended starting
concentration is 1 µg/mL.
Please optimize the
concentration based on
your specific assay
requirements.

Contact

☎ | 400-999-6126

✉ | cn.market@abclonal.com.cn

🌐 | www.abclonal.com.cn

Immunogen Information

Gene ID

54611

Swiss Prot

Q9Z0X4

Immunogen

Recombinant protein (or fragment). This information is considered to be commercially sensitive.

Synonyms

HTNB; CGI-PDE; CGI-PDE A; CGI-PDE-A

Product Information

Source

Rabbit

Isotype

IgG

Purification

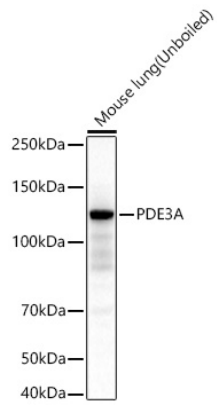
Affinity purification

Storage

Store at -20°C. Avoid freeze / thaw cycles.

Buffer: PBS with 0.09% Sodium azide, 50% glycerol, pH7.3.

Validation Data



Western blot analysis of lysates from Mouse lung using PDE3A Rabbit pAb (A28279) at 1:1000 dilution incubated overnight at 4°C.

Secondary antibody: HRP-conjugated Goat anti-Rabbit IgG (H+L) (AS014) at 1:10000 dilution.

Lysates/proteins: 25 µg per lane.

Blocking buffer: 3% nonfat dry milk in TBST.

Detection: ECL Basic Kit (RM00020).

Exposure time: 45 s.