

# ABflo® 647 Rabbit anti-Human CD206/MMR mAb

**Catalog No.: A28284**

## Basic Information

**Observed MW****Calculated MW**

166kDa

**Category**

Primary antibody

**Applications**

FC

**Cross-Reactivity**

Human

**CloneNo number**

ARC70412

**Conjugate**

ABflo® 647. Ex:648nm. Em:664nm.

## Background

The mannose receptor (MR/CLEC13D/CD206/MMR/MRC1/Macrophage Mannose Receptor 1) is an endocytic receptor expressed on dendritic cells, macrophages, and avascular endothelium. It is a highly glycosylated type I transmembrane protein featuring three distinct types of extracellular domains and a short carboxyl-terminal cytoplasmic tail that lacks obvious signaling motifs. The extracellular portion of the protein comprises an N-terminal cysteine-rich (CR) domain that binds sulfated sugar chains, a single fibronectin type II (FNII) domain that binds collagen, and eight C-type lectin domains (CTLDs) that recognize carbohydrate ligands containing mannose, fucose, and N-acetylglucosamine (GlcNAc). The receptor continuously cycles between the plasma membrane and early endosomes. Its functions include mediating antigen cross-presentation, facilitating the clearance of endogenous glycoproteins (e.g., maintaining glycoprotein homeostasis), and detecting and transporting pathogens via the lymphatics. The mannose receptor is a canonical marker for M2 macrophages.

## Recommended Dilutions

**FC** 5 µl per 10<sup>6</sup> cells in  
100 µl volume

## Immunogen Information

**Gene ID**

4360

**Swiss Prot**

P22897

**Immunogen**

Recombinant protein (or fragment). This information is considered to be commercially sensitive.

**Synonyms**

MMR; hMR; CD206; MRC1L1; CLEC13D; CLEC13DL; bA541I19.1

## Contact

☎ | 400-999-6126

✉ | [cn.market@abclonal.com.cn](mailto:cn.market@abclonal.com.cn)

🌐 | [www.abclonal.com.cn](http://www.abclonal.com.cn)

## Product Information

**Source**

Rabbit

**Isotype**

IgG

**Purification**

Affinity purification

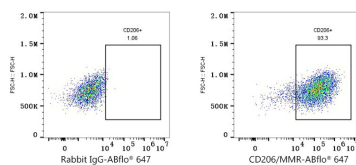
**Storage**

Store at 2-8°C. Avoid freeze.

Buffer: PBS with 0.09% Sodium azide, 0.2% BSA, pH7.3.

## Validation Data

---



Flow cytometry: 1X10<sup>6</sup> Human peripheral blood monocytes (treated with 20 ng/mL M-CSF for 7 days and then with 20ng/ml IL-4 and 20ng/ml IL-13 for 2 days) were surface-stained with ABflo®647 Rabbit IgG isotype control (A22070, 5 µl/Test, left) and ABflo® 647 Rabbit anti-Human CD206/MMR mAb (A28284, 5 µl/Test, right).