

CD36 Rabbit pAb

Catalog No.: A28290

Basic Information

Observed MW

70-110 kDa

Calculated MW

53 kDa

Category

Primary antibody

Applications

WB, IF/ICC, IHC-P, ELISA

Cross-Reactivity

Mouse, Rat

Background

Enables lipoprotein particle binding activity; lipoteichoic acid immune receptor activity; and low-density lipoprotein particle receptor activity. Involved in several processes, including amyloid fibril formation; positive regulation of intracellular signal transduction; and regulation of biosynthetic process. Acts upstream of or within several processes, including phagocytosis; positive regulation of cytokine production; and response to bacterium. Located in several cellular components, including brush border membrane; external side of plasma membrane; and membrane raft. Is expressed in several structures, including axial skeleton; bone; connective tissue; hindlimb; and telencephalon. Used to study platelet-type bleeding disorder 10. Human ortholog(s) of this gene implicated in several diseases, including blood platelet disease (multiple); hemolytic-uremic syndrome; osteoarthritis; pulmonary tuberculosis; and type 2 diabetes mellitus. Orthologous to human CD36 (CD36 molecule (CD36 blood group)).

Recommended Dilutions

WB 1:1000 - 1:9000**IF/ICC** 1:200 - 1:400**IHC-P** 1:500 - 1:2000

ELISA Recommended starting concentration is 1 µg/mL. Please optimize the concentration based on your specific assay requirements.

Immunogen Information

Gene ID

12491

Swiss Prot

Q08857

Immunogen

Recombinant protein (or fragment). This information is considered to be commercially sensitive.

Synonyms

FAT; GPIV; Scarb3

Contact

 | 400-999-6126 | cn.market@abclonal.com.cn | www.abclonal.com.cn

Product Information

Source

Rabbit

Isotype

IgG

Purification

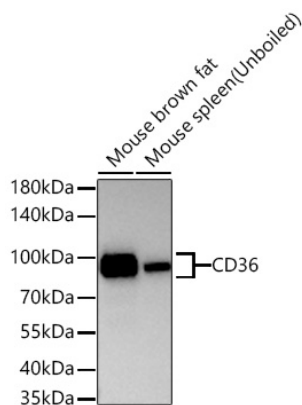
Affinity purification

Storage

Store at -20°C. Avoid freeze / thaw cycles.

Buffer: PBS with 0.09% Sodium azide, 50% glycerol, pH7.3.

Validation Data



Western blot analysis of various lysates using CD36 Rabbit pAb (A28290) at 1:3000 dilution incubated overnight at 4°C.

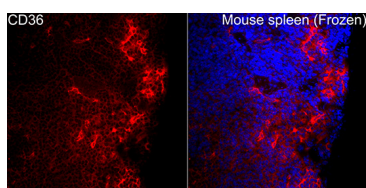
Secondary antibody: HRP-conjugated Goat anti-Rabbit IgG (H+L) (AS014) at 1:10000 dilution.

Lysates/proteins: 25 µg per lane.

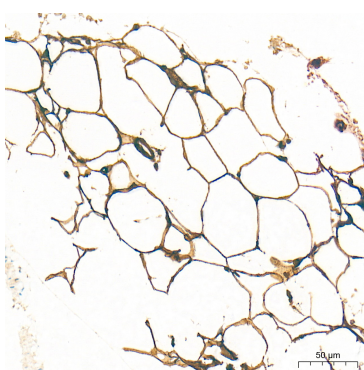
Blocking buffer: 3% nonfat dry milk in TBST.

Detection: ECL Basic Kit (RM00020).

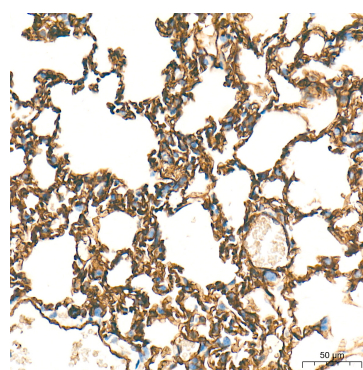
Exposure time: 1 s.



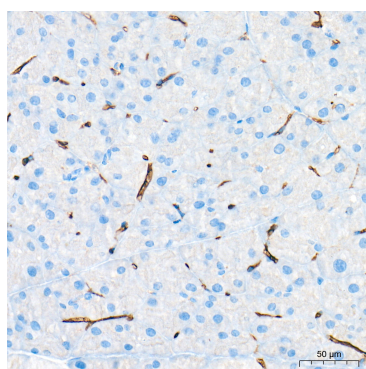
Immunofluorescence analysis of frozen sections Mouse spleen tissue using CD36 Rabbit pAb (A28290) at a dilution of 1:200 (40x lens). Secondary antibody: Cy3-conjugated Goat anti-Rabbit IgG (H+L)(AS007) at 1:500 dilution. Blue: DAPI for nuclear staining.



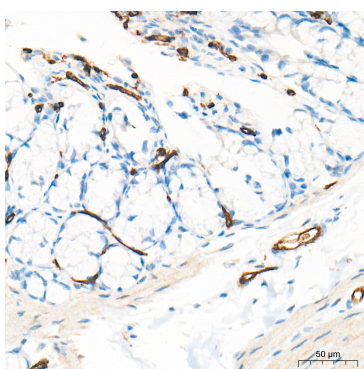
Immunohistochemistry analysis of paraffin-embedded Mouse fat tissue using CD36 Rabbit pAb (A28290) at a dilution of 1:1000 (40x lens). High pressure antigen retrieval performed with 0.01M Tris-EDTA Buffer (pH 9.0) prior to IHC staining.



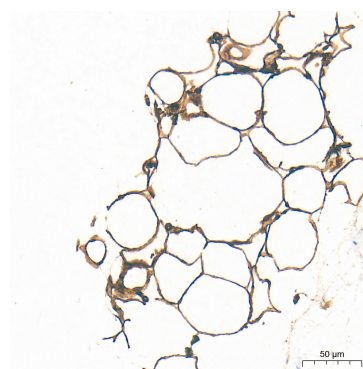
Immunohistochemistry analysis of paraffin-embedded Mouse lung tissue using CD36 Rabbit pAb (A28290) at a dilution of 1:1000 (40x lens). High pressure antigen retrieval performed with 0.01M Tris-EDTA Buffer (pH 9.0) prior to IHC staining.



Immunohistochemistry analysis of paraffin-embedded Mouse pancreas tissue using CD36 Rabbit pAb (A28290) at a dilution of 1:1000 (40x lens). High pressure antigen retrieval performed with 0.01M Tris-EDTA Buffer (pH 9.0) prior to IHC staining.



Immunohistochemistry analysis of paraffin-embedded Rat colon tissue using CD36 Rabbit pAb (A28290) at a dilution of 1:1000 (40x lens). High pressure antigen retrieval performed with 0.01M Tris-EDTA Buffer (pH 9.0) prior to IHC staining.



Immunohistochemistry analysis of paraffin-embedded Rat fat tissue using CD36 Rabbit pAb (A28290) at a dilution of 1:1000 (40x lens). High pressure antigen retrieval performed with 0.01M Tris-EDTA Buffer (pH 9.0) prior to IHC staining.