

# FDX1/ADX Rabbit pAb

Catalog No.: A28292

## Basic Information

### Observed MW

14 kDa

### Calculated MW

20 kDa

### Category

Primary antibody

### Applications

WB,IP,IF/ICC,IHC-P,ELISA

### Cross-Reactivity

Human, Mouse, Rat

## Background

Ferredoxins are iron-sulfur proteins that facilitate monooxygenase reactions catalyzed by P450 enzymes. The protein encoded by this gene is present in the mitochondrial matrix and transfers electrons from ferredoxin reductase to steroidogenic mitochondrial cytochrome P450 proteins. Alternative splicing results in multiple transcript variants encoding different isoforms.

## Recommended Dilutions

<b>WB</b>	1:1000 - 1:9000
<b>IP</b>	0.5µg-4µg antibody for 200µg-600µg extracts of whole cells
<b>IF/ICC</b>	1:100 - 1:300
<b>IHC-P</b>	1:500 - 1:2000
<b>ELISA</b>	Recommended starting concentration is 1 µg/mL. Please optimize the concentration based on your specific assay requirements.

## Contact

☎ | 400-999-6126

✉ | [cn.market@abclonal.com.cn](mailto:cn.market@abclonal.com.cn)

🌐 | [www.abclonal.com.cn](http://www.abclonal.com.cn)

## Immunogen Information

### Gene ID

14148

### Swiss Prot

P46656

### Immunogen

Synthetic peptide. This information is considered to be commercially sensitive.

### Synonyms

FDX1; ADX; FDX; LOH11CR1D; ferredoxin 1

## Product Information

### Source

Rabbit

### Isotype

IgG

### Purification

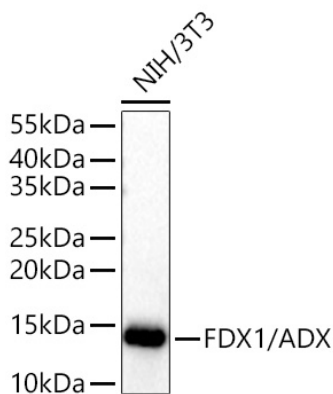
Affinity purification

### Storage

Store at -20°C. Avoid freeze / thaw cycles.

Buffer: PBS with 0.09% Sodium azide,50% glycerol,pH7.3.

## Validation Data



Western blot analysis of lysates from NIH/3T3 cells using FDX1/ADX Rabbit pAb (A28292) at 1:3000 dilution .

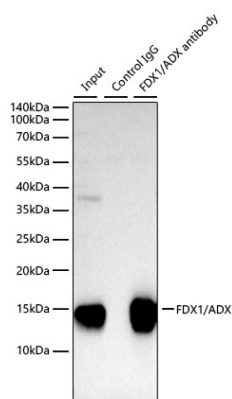
Secondary antibody: HRP-conjugated Goat anti-Rabbit IgG (H+L) (AS014) at 1:10000 dilution.

Lysates/proteins: 25 µg per lane.

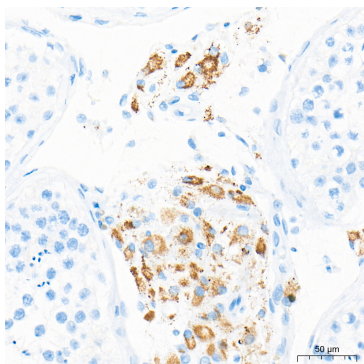
Blocking buffer: 3% nonfat dry milk in TBST.

Detection: ECL Basic Kit (RM00020).

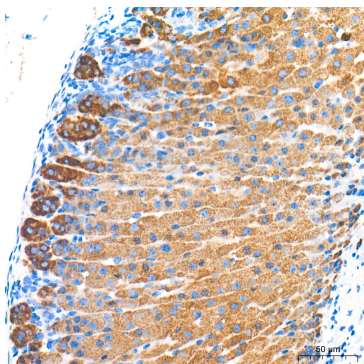
Exposure time: 5 s.



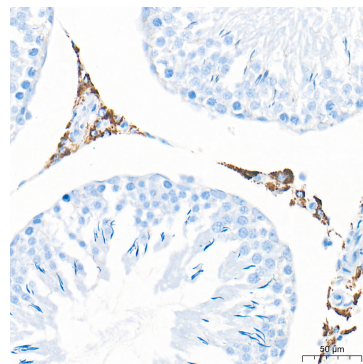
Immunoprecipitation of FDX1/ADX from 600 µg extracts of Mouse ovary tissue was performed using 2 µg of FDX1/ADX Rabbit pAb (A28292). Rabbit Control IgG (AC005) was used to precipitate the Control IgG sample. IP samples were eluted with 1x reducing Laemmli Buffer. The Input lane represents 10% of the total input. Western blot analysis of immunoprecipitates was conducted using FDX1/ADX Rabbit pAb (A28292) at a dilution of 1:10000.



Immunohistochemistry analysis of paraffin-embedded Human testis tissue using FDX1/ADX Rabbit pAb (A28292) at a dilution of 1:2000 (40x lens). High pressure antigen retrieval performed with 0.01M Tris-EDTA Buffer (pH 9.0) prior to IHC staining.

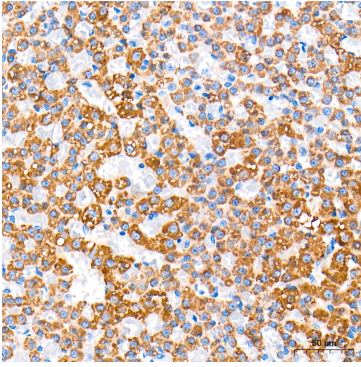


Immunohistochemistry analysis of paraffin-embedded Mouse adrenal gland tissue using FDX1/ADX Rabbit pAb (A28292) at a dilution of 1:2000 (40x lens). High pressure antigen retrieval performed with 0.01M Tris-EDTA Buffer (pH 9.0) prior to IHC staining.

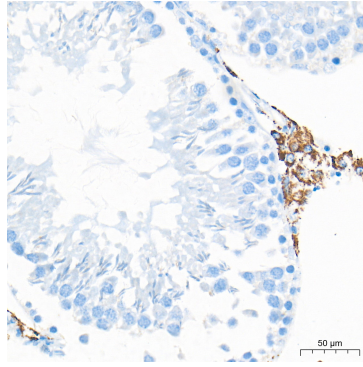


Immunohistochemistry analysis of paraffin-embedded Mouse testis tissue using FDX1/ADX Rabbit pAb (A28292) at a dilution of 1:2000 (40x lens). High pressure antigen retrieval performed with 0.01M Tris-EDTA Buffer (pH 9.0) prior to IHC staining.

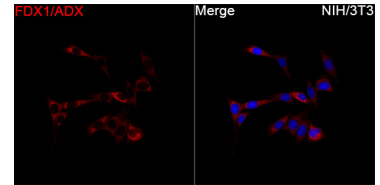
## Validation Data



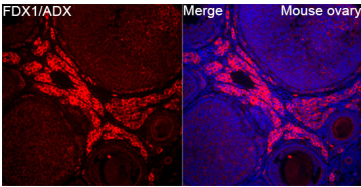
Immunohistochemistry analysis of paraffin-embedded Rat adrenal gland tissue using FDX1/ADX Rabbit pAb (A28292) at a dilution of 1:2000 (40x lens). High pressure antigen retrieval performed with 0.01M Tris-EDTA Buffer (pH 9.0) prior to IHC staining.



Immunohistochemistry analysis of paraffin-embedded Rat testis tissue using FDX1/ADX Rabbit pAb (A28292) at a dilution of 1:2000 (40x lens). High pressure antigen retrieval performed with 0.01M Tris-EDTA Buffer (pH 9.0) prior to IHC staining.



Immunofluorescence analysis of NIH/3T3 cells using FDX1/ADX Rabbit pAb (A28292) at a dilution of 1:100 (40x lens). Secondary antibody: Cy3-conjugated Goat anti-Rabbit IgG (H+L)(AS007) at 1:500 dilution. Blue: DAPI for nuclear staining.



Immunofluorescence analysis of Mouse ovary tissue using FDX1/ADX Rabbit pAb (A28292) at a dilution of 1:100 (40x lens). Secondary antibody: Cy3-conjugated Goat anti-Rabbit IgG (H+L)(AS007) at 1:500 dilution. Blue: DAPI for nuclear staining. High pressure antigen retrieval performed with 0.01M Citrate Buffer (pH 6.0) prior to IF staining.