

RAB7 Mouse mAb

Catalog No.: A28294

Basic Information

Observed MW

23 kDa

Calculated MW

23 kDa

Category

Primary antibody

Applications

WB,IF/ICC,IHC-P,ELISA

Cross-Reactivity

Human, Mouse, Rat

CloneNo number

AMC50097

Recommended Dilutions

WB 1:2000 - 1:10000

IF/ICC 1:200 - 1:600

IHC-P 1:200 - 1:800

ELISA Recommended starting concentration is 1 µg/mL. Please optimize the concentration based on your specific assay requirements. For high-ratio antibody dilutions ($\geq 1:10000$) a sequential dilution method is strongly recommended to ensure measurement accuracy.

Background

RAB family members are small, RAS-related GTP-binding proteins that are important regulators of vesicular transport. Each RAB protein targets multiple proteins that act in exocytic / endocytic pathways. This gene encodes a RAB family member that regulates vesicle traffic in the late endosomes and also from late endosomes to lysosomes. This encoded protein is also involved in the cellular vacuolation of the VacA cytotoxin of *Helicobacter pylori*. Mutations at highly conserved amino acid residues in this gene have caused some forms of Charcot-Marie-Tooth (CMT) type 2 neuropathies.

Immunogen Information

Gene ID

7879

Swiss Prot

P51149

Immunogen

Synthetic peptide. This information is considered to be commercially sensitive.

Synonyms

RAB7; CMT2B; PRO2706

Product Information

Source

Mouse

Isotype

IgG1. Rabbit-derived mouse chimeric antibody

Purification

Affinity purification

Storage

Store at -20°C. Avoid freeze / thaw cycles.

Buffer: PBS with 0.09% Sodium azide, 50% glycerol, pH7.3.

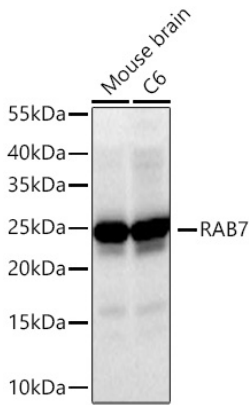
Contact

 | 400-999-6126

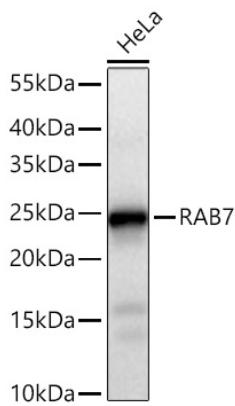
 | cn.market@abclonal.com.cn

 | www.abclonal.com.cn

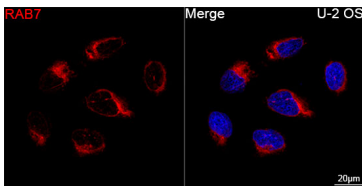
Validation Data



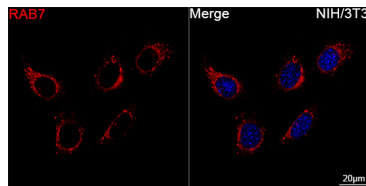
Western blot analysis of various lysates using RAB7 Mouse mAb (A28294) at 1:5000 dilution incubated overnight at 4°C.
Secondary antibody: HRP-conjugated Goat anti-Mouse IgG (H+L) (AS003) at 1:10000 dilution.
Lysates/proteins: 25 µg per lane.
Blocking buffer: 3% nonfat dry milk in TBST.
Detection: ECL Basic Kit (RM00020).
Exposure time: 20 s.



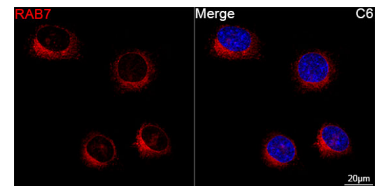
Western blot analysis of lysates from HeLa cells using RAB7 Mouse mAb (A28294) at 1:5000 dilution incubated overnight at 4°C.
Secondary antibody: HRP-conjugated Goat anti-Mouse IgG (H+L) (AS003) at 1:10000 dilution.
Lysates/proteins: 25 µg per lane.
Blocking buffer: 3% nonfat dry milk in TBST.
Detection: ECL Basic Kit (RM00020).
Exposure time: 10 s.



Confocal imaging of U-2 OS cells using RAB7 Mouse mAb (A28294, dilution 1:200) followed by a further incubation with Cy3-conjugated Goat anti-Mouse IgG (H+L) (AS008, dilution 1:500) (Red). DAPI was used for nuclear staining (Blue). Objective: 100x.

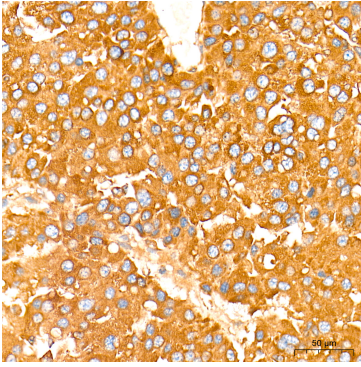


Confocal imaging of NIH/3T3 cells using RAB7 Mouse mAb (A28294, dilution 1:200) followed by a further incubation with Cy3-conjugated Goat anti-Mouse IgG (H+L) (AS008, dilution 1:500) (Red). DAPI was used for nuclear staining (Blue). Objective: 100x.

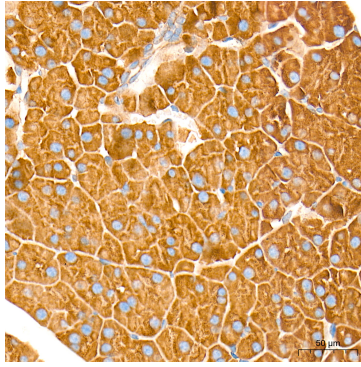


Confocal imaging of C6 cells using RAB7 Mouse mAb (A28294, dilution 1:200) followed by a further incubation with Cy3-conjugated Goat anti-Mouse IgG (H+L) (AS008, dilution 1:500) (Red). DAPI was used for nuclear staining (Blue). Objective: 100x.

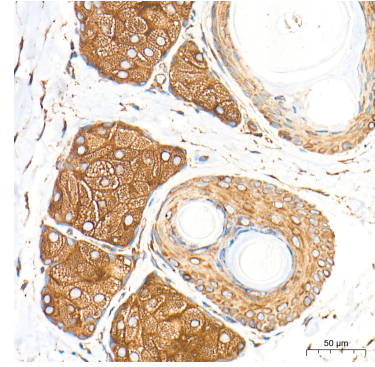
Validation Data



Immunohistochemistry analysis of paraffin-embedded Human liver cancer tissue using RAB7 Mouse mAb (A28294) at a dilution of 1:500 (40x lens). High pressure antigen retrieval performed with 0.01M Tris-EDTA Buffer (pH 9.0) prior to IHC staining.



Immunohistochemistry analysis of paraffin-embedded Mouse pancreas tissue using RAB7 Mouse mAb (A28294) at a dilution of 1:500 (40x lens). High pressure antigen retrieval performed with 0.01M Tris-EDTA Buffer (pH 9.0) prior to IHC staining.



Immunohistochemistry analysis of paraffin-embedded Rat skin tissue using RAB7 Mouse mAb (A28294) at a dilution of 1:500 (40x lens). High pressure antigen retrieval performed with 0.01M Tris-EDTA Buffer (pH 9.0) prior to IHC staining.