

# Nav1.5/SCN5A Rabbit mAb

Catalog No.: A28322 **Recombinant**

## Basic Information

### Observed MW

250 kDa

### Calculated MW

227 kDa/223 kDa/221 kDa/225 kDa

### Category

Primary antibody

### Applications

WB,IHC-P,ELISA

### Cross-Reactivity

Human

### CloneNo number

ARC77714

## Background

The protein encoded by this gene is an integral membrane protein and tetrodotoxin-resistant voltage-gated sodium channel subunit. This protein is found primarily in cardiac muscle and is responsible for the initial upstroke of the action potential in an electrocardiogram. Defects in this gene have been associated with long QT syndrome type 3 (LQT3), atrial fibrillation, cardiomyopathy, and Brugada syndrome 1, all autosomal dominant cardiac diseases. Alternative splicing results in several transcript variants encoding different isoforms.

## Recommended Dilutions

**WB** 1:2000 - 1:5000

**IHC-P** 1:100 - 1:400

**ELISA** Recommended starting concentration is 1 µg/mL. Please optimize the concentration based on your specific assay requirements. For high-ratio antibody dilutions ( $\geq 1:10000$ ) a sequential dilution method is strongly recommended to ensure measurement accuracy.

## Immunogen Information

### Gene ID

6331

### Swiss Prot

Q14524

### Immunogen

Recombinant protein (or fragment). This information is considered to be commercially sensitive.

### Synonyms

HB1; HB2; HH1; IVF; VF1; HBBD; ICCD; LQT3; SSS1; CDCD2; CMD1E; CMPD2; PFHB1; Nav1.5

## Product Information

### Source

Rabbit

### Isotype

IgG

### Purification

Affinity purification

### Storage

Store at -20°C. Avoid freeze / thaw cycles.

Buffer: PBS with 0.09% Sodium azide, 0.05% BSA, 50% glycerol, pH7.3.

## Contact

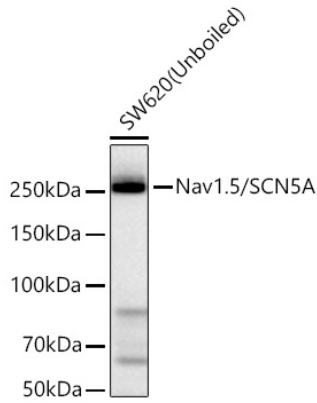
☎ | 400-999-6126

✉ | [cn.market@abclonal.com.cn](mailto:cn.market@abclonal.com.cn)

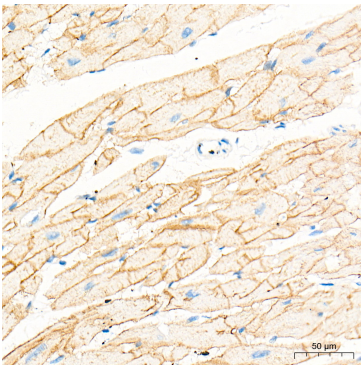
🌐 | [www.abclonal.com.cn](http://www.abclonal.com.cn)

## Validation Data

---



Western blot analysis of lysates from SW620 cells using Nav1.5/SCN5A Rabbit mAb (A28322) at 1:5000 dilution incubated overnight at 4°C.  
Secondary antibody: HRP-conjugated Goat anti-Rabbit IgG (H+L) (AS014) at 1:10000 dilution.  
Lysates/proteins: 25 µg per lane.  
Blocking buffer: 3% nonfat dry milk in TBST.  
Detection: ECL Basic Kit (RM00020).  
Exposure time: 90 s.



Immunohistochemistry analysis of paraffin-embedded Human heart tissue using Nav1.5/SCN5A Rabbit mAb (A28322) at a dilution of 1:200 (40x lens). High pressure antigen retrieval performed with 0.01M Tris-EDTA Buffer (pH 9.0) prior to IHC staining.