

MYH6/A α -MHC Rabbit mAb

Catalog No.: A28325 **Recombinant**

Basic Information

Observed MW

250 kDa

Calculated MW

224 kDa

Category

Primary antibody

Applications

WB,IF-P,IHC-P,ELISA

Cross-Reactivity

Mouse, Rat

CloneNo number

ARC78391

Background

Enables microfilament motor activity. Involved in cardiac muscle contraction. Acts upstream of or within several processes, including adult heart development; regulation of heart contraction; and striated muscle cell development. Located in Z disc and stress fiber. Part of myosin complex. Is expressed in several structures, including brown fat; embryo mesenchyme; great vessel of heart; heart; and skeletal musculature. Used to study dilated cardiomyopathy; dilated cardiomyopathy 1EE; and hypertrophic cardiomyopathy 14. Human ortholog(s) of this gene implicated in atrial heart septal defect (multiple); heart conduction disease (multiple); and intrinsic cardiomyopathy (multiple). Orthologous to human MYH6 (myosin heavy chain 6).

Recommended Dilutions

WB 1:10000 - 1:30000

IF-P 1:200 - 1:800

IHC-P 1:1000 - 1:4000

ELISA Recommended starting concentration is 1 μ g/mL. Please optimize the concentration based on your specific assay requirements. For high-ratio antibody dilutions (\geq 1:10000) a sequential dilution method is strongly recommended to ensure measurement accuracy.

Immunogen Information

Gene ID

17888

Swiss Prot

Q02566

Immunogen

Synthetic peptide. This information is considered to be commercially sensitive.

Synonyms

Myhca; Myhc-a; alphaMHC; alpha-MHC; A830009F23Rik

Product Information

Source

Rabbit

Isotype

IgG

Purification

Affinity purification

Storage

Store at -20°C. Avoid freeze / thaw cycles.

Buffer: PBS with 0.09% Sodium azide,0.05% BSA,50% glycerol,pH7.3.

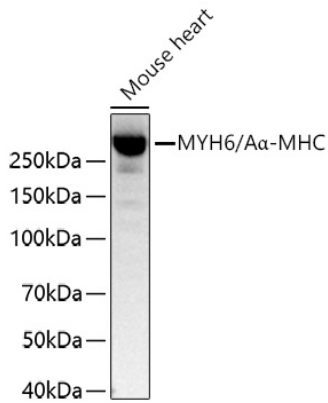
Contact

 | 400-999-6126

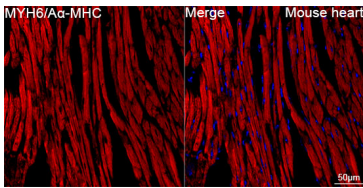
 | cn.market@abclonal.com.cn

 | www.abclonal.com.cn

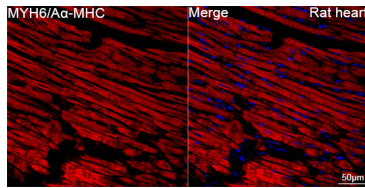
Validation Data



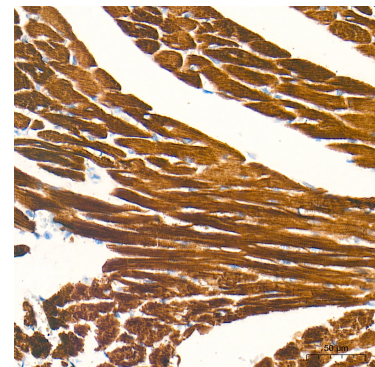
Western blot analysis of lysates from Mouse heart using MYH6/A α -MHC Rabbit mAb (A28325) at 1:10000 dilution incubated overnight at 4°C.
Secondary antibody: HRP-conjugated Goat anti-Rabbit IgG (H+L) (AS014) at 1:10000 dilution.
Lysates/proteins: 25 μ g per lane.
Blocking buffer: 3% nonfat dry milk in TBST.
Detection: ECL Basic Kit (RM00020).
Exposure time: 1 s.



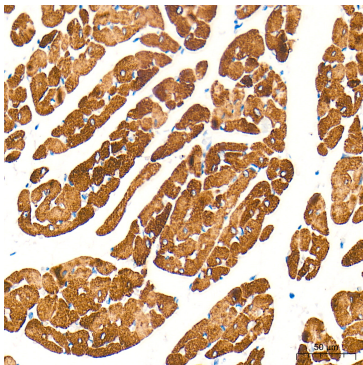
Confocal imaging of paraffin-embedded Mouse heart tissue using MYH6/A α -MHC Rabbit mAb (A28325, dilution 1:200) followed by a further incubation with Cy3-conjugated Goat Anti-Rabbit IgG (H+L) (AS007, dilution 1:500) (Red). DAPI was used for nuclear staining (Blue). High pressure antigen retrieval performed with 0.01M Citrate Buffer (pH 6.0) prior to IF staining. Objective: 40x.



Confocal imaging of paraffin-embedded Rat heart tissue using MYH6/A α -MHC Rabbit mAb (A28325, dilution 1:200) followed by a further incubation with Cy3-conjugated Goat Anti-Rabbit IgG (H+L) (AS007, dilution 1:500) (Red). DAPI was used for nuclear staining (Blue). High pressure antigen retrieval performed with 0.01M Citrate Buffer (pH 6.0) prior to IF staining. Objective: 40x.



Immunohistochemistry analysis of paraffin-embedded Mouse heart tissue using MYH6/A α -MHC Rabbit mAb (A28325) at a dilution of 1:1000 (40x lens). High pressure antigen retrieval performed with 0.01M Tris-EDTA Buffer (pH 9.0) prior to IHC staining.



Immunohistochemistry analysis of paraffin-embedded Rat heart tissue using MYH6/A α -MHC Rabbit mAb (A28325) at a dilution of 1:1000 (40x lens). High pressure antigen retrieval performed with 0.01M Tris-EDTA Buffer (pH 9.0) prior to IHC staining.