

# ABflo® 647 Rabbit anti-Dog CD8a mAb

Catalog No.: A28328

## Basic Information

### Observed MW

Refer to figures

### Calculated MW

26 kDa

### Category

Primary antibody

### Applications

FC

### Cross-Reactivity

Dog

### CloneNo number

ARC77040

### Conjugate

ABflo® 647, Ex:648nm, Em:664nm.

## Recommended Dilutions

FC ≤0.5 µg per million cells  
in 100 µl volume

## Background

The CD8 antigen is a cell surface glycoprotein found on most cytotoxic T lymphocytes that mediates efficient cell-cell interactions within the immune system. The CD8 antigen acts as a coreceptor with the T-cell receptor on the T lymphocyte to recognize antigens displayed by an antigen presenting cell in the context of class I MHC molecules. The coreceptor functions as either a homodimer composed of two alpha chains or as a heterodimer composed of one alpha and one beta chain. Both alpha and beta chains share significant homology to immunoglobulin variable light chains. This gene encodes the CD8 alpha chain. Multiple transcript variants encoding different isoforms have been found for this gene. The major protein isoforms of this gene differ by the presence or absence of a transmembrane domain and thus differ in being a membrane-anchored or secreted protein.

## Immunogen Information

### Gene ID

403157

### Swiss Prot

P33706

### Immunogen

Recombinant protein (or fragment). This information is considered to be commercially sensitive.

### Synonyms

CD8; p32; Leu2; CD8alpha; CD8A

## Contact

 | 400-999-6126

 | [cn.market@abclonal.com.cn](mailto:cn.market@abclonal.com.cn)

 | [www.abclonal.com.cn](http://www.abclonal.com.cn)

## Product Information

### Source

Rabbit

### Isotype

IgG

### Purification

Affinity purification

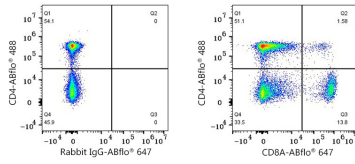
### Storage

Store at 2-8°C. Avoid freeze.

Buffer: PBS with 0.09% Sodium azide, 0.2% BSA, pH7.3.

## Validation Data

---



Flow cytometry: 1X10<sup>6</sup> Dog PBMC were surface-stained with ABflo® 488 Rabbit anti-Dog CD4 mAb (A22687, 5 µl/Test) and ABflo® 647 Rabbit IgG isotype control (A22070, 5 µl/Test, left) or ABflo® 647 Rabbit anti-Dog CD8A mAb (A28328, 0.5 µg, right). Cells in the lymphocyte gate were used for analysis.