

# Nephrin Rabbit mAb

**Catalog No.: A28348** Recombinant

## Basic Information

**Observed MW**

135-200 kDa

**Calculated MW**

135 kDa/136 kDa

**Category**

Primary antibody

**Applications**

WB,IF-P,IHC-P,ELISA

**Cross-Reactivity**

Mouse

**CloneNo number**

ARC77478

## Background

Predicted to enable cell adhesion molecule binding activity; cytoskeletal protein binding activity; and protein domain specific binding activity. Involved in myoblast fusion; skeletal muscle tissue development; and slit diaphragm assembly. Acts upstream of or within several processes, including JNK cascade; cell adhesion; and positive regulation of actin filament polymerization. Located in cell projection; focal adhesion; and plasma membrane. Is active in cell periphery. Is expressed in central nervous system; metanephros; and skeletal muscle. Used to study nephrotic syndrome. Human ortholog(s) of this gene implicated in nephrotic syndrome type 1. Orthologous to human NPHS1 (NPHS1 adhesion molecule, nephrin).

## Recommended Dilutions

**WB** 1:3000 - 1:10000

**IF-P** 1:200 - 1:400

**IHC-P** 1:2000 - 1:8000

**ELISA** Recommended starting concentration is 1 µg/mL. Please optimize the concentration based on your specific assay requirements. For high-ratio antibody dilutions ( $\geq 1:10000$ ) a sequential dilution method is strongly recommended to ensure measurement accuracy.

## Immunogen Information

**Gene ID**

54631

**Swiss Prot**

Q9QZS7

**Immunogen**

Recombinant protein (or fragment). This information is considered to be commercially sensitive.

**Synonyms**

nephrin; NephrinB

## Product Information

**Source**

Rabbit

**Isotype**

IgG

**Purification**

Affinity purification

**Storage**

Store at -20°C. Avoid freeze / thaw cycles.

Buffer: PBS with 0.09% Sodium azide, 0.05% BSA, 50% glycerol, pH7.3.

## Contact

---

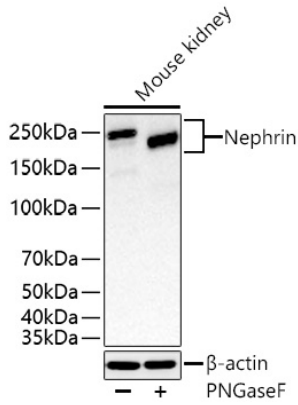
 | 400-999-6126

 | [cn.market@abclonal.com.cn](mailto:cn.market@abclonal.com.cn)

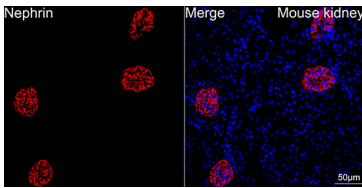
 | [www.abclonal.com.cn](http://www.abclonal.com.cn)

---

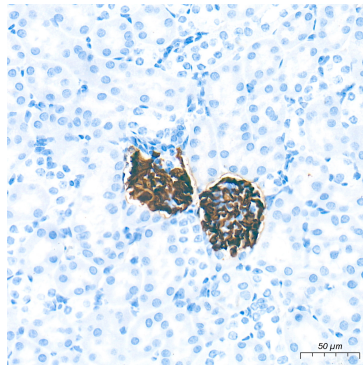
## Validation Data



Western blot analysis of various lysates using Nephryn Rabbit mAb (A28348) at 1:5000 dilution incubated overnight at 4°C. Mouse kidney treated with PNGase F (10 uL) at 37°C for 1.5 hours.  
Secondary antibody: HRP-conjugated Goat anti-Rabbit IgG (H+L) (AS014) at 1:10000 dilution.  
Lysates/proteins: 30 µg per lane.  
Blocking buffer: 3% nonfat dry milk in TBST.  
Detection: ECL Basic Kit (RM00020).  
Exposure time: 45 s.



Confocal imaging of paraffin-embedded Mouse kidney tissue using Nephryn Rabbit mAb (A28348, dilution 1:200) followed by a further incubation with Cy3-conjugated Goat Anti-Rabbit IgG (H+L) (AS007, dilution 1:500) (Red). DAPI was used for nuclear staining (Blue). High pressure antigen retrieval performed with 0.01M Citrate Buffer (pH 6.0) prior to IF staining. Objective: 40x.



Immunohistochemistry analysis of paraffin-embedded Mouse kidney tissue using Nephryn Rabbit mAb (A28348) at a dilution of 1:5000 (40x lens). High pressure antigen retrieval performed with 0.01M Tris-EDTA Buffer (pH 9.0) prior to IHC staining.