

# FITC Rabbit anti-Human CD3 mAb

Catalog No.: A28379

## Basic Information

### Observed MW

### Calculated MW

23 kDa

### Category

Primary antibody

### Applications

FC

### Cross-Reactivity

Human

### CloneNo number

ARC68273

### Conjugate

FITC. Ex:491nm. Em:516nm.

## Background

CD3ε is a 20 kD subunit of the CD3/T-cell receptor (TCR) complex. This complex typically comprises two CD3ε chains, one CD3γ chain, one CD3δ chain, a CD3ζ (CD247) homodimer, and a T-cell receptor heterodimer. It is expressed on all mature T lymphocytes, NKT cells, and a subset of thymocytes. CD3, also known as T3, is a member of the immunoglobulin superfamily and plays a critical role in antigen recognition, signal transduction, and T-cell activation.

## Recommended Dilutions

FC 5 μl per 10<sup>6</sup> cells in  
100 μl volume

## Immunogen Information

### Gene ID

916

### Swiss Prot

P07766

### Immunogen

Recombinant protein (or fragment). This information is considered to be commercially sensitive.

### Synonyms

T3E; TCRE; IMD18; CD3epsilon

## Contact

☎ | 400-999-6126

✉ | [cn.market@abclonal.com.cn](mailto:cn.market@abclonal.com.cn)

🌐 | [www.abclonal.com.cn](http://www.abclonal.com.cn)

## Product Information

### Source

Rabbit

### Isotype

IgG

### Purification

Affinity purification

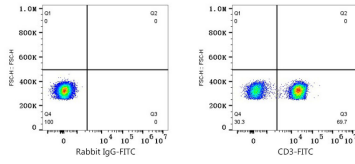
### Storage

Store at 2-8°C. Avoid freeze.

Buffer: PBS with 0.09% Sodium azide, 0.2% BSA, pH7.3.

## Validation Data

---



Flow cytometry:  $1 \times 10^6$  Human PBMC were surface-stained with FITC Rabbit IgG isotype control (A25616, 5  $\mu$ l/Test, left) or FITC Rabbit anti-Human CD3 mAb (A28379, 5  $\mu$ l/Test, right). Cells in the lymphocyte gate were used for analysis.