

APC Rabbit anti-Mouse Ly-6C mAb

Catalog No.: A28380

Basic Information

Observed MW

Calculated MW

15 kDa

Category

Primary antibody

Applications

FC

Cross-Reactivity

Mouse

CloneNo number

ARC78078

Conjugate

APC. Ex:650nm. Em:660nm.

Background

Predicted to enable acetylcholine receptor binding activity and acetylcholine receptor inhibitor activity. Predicted to be involved in acetylcholine receptor signaling pathway. Located in external side of plasma membrane. Is expressed in embryo mesenchyme; gut; liver; metanephros; and nasal cavity. Orthologous to human LY6H (lymphocyte antigen 6 family member H).

Recommended Dilutions

FC ≤0.5 µg per million cells
 in 100 µl volume

Immunogen Information

Gene ID

17067

Swiss Prot

P0CW02

Immunogen

Synthetic peptide. This information is considered to be commercially sensitive.

Synonyms

Ly6c; Ly-6C; Ly-6C1

Contact

 | 400-999-6126

 | cn.market@abclonal.com.cn

 | www.abclonal.com.cn

Product Information

Source

Rabbit

Isotype

IgG

Purification

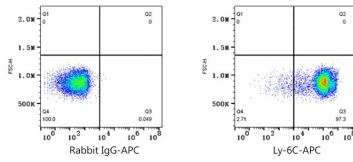
Affinity purification

Storage

Store at 2-8°C. Avoid freeze.

Buffer: PBS with 0.09% Sodium azide,0.2% BSA,pH7.3.

Validation Data



Flow cytometry: 1×10^6 C57BL/6 mouse bone marrow cells were surface-stained with APC Rabbit IgG isotype control (A24173, 5 μ l/Test, left) or APC Rabbit anti-Mouse Ly-6C mAb (A28380, 0.5 μ g, right).