

[KO Validated] RIPK1/RIP Rabbit mAb

Catalog No.: A28395 **KO** **Validated** **Recombinant**

Basic Information

Observed MW

76 kDa

Calculated MW

76 kDa/71 kDa

Category

Primary antibody

Applications

WB,IP,ELISA

Cross-Reactivity

Human

CloneNo number

ARC77515

Background

This gene encodes a member of the receptor-interacting protein (RIP) family of serine/threonine protein kinases. The encoded protein plays a role in inflammation and cell death in response to tissue damage, pathogen recognition, and as part of developmental regulation. RIPK1/RIPK3 kinase-mediated necrosis is referred to as necroptosis. Genetic disruption of this gene in mice results in death shortly after birth.

Recommended Dilutions

WB 1:16000 - 1:56000

IP 0.5µg-4µg antibody for
200µg-400µg extracts of
whole cells

ELISA Recommended starting
concentration is 1 µg/mL.
Please optimize the
concentration based on
your specific assay
requirements. For high-
ratio antibody dilutions
(≥1:10000) a sequential
dilution method is
strongly recommended
to ensure measurement
accuracy.

Immunogen Information

Gene ID

8737

Swiss Prot

Q13546

Immunogen

Recombinant protein (or fragment). This information is considered to be commercially sensitive.

Synonyms

RIP; RIP1; AIEFL; IMD57; RIP-1

Product Information

Source

Rabbit

Isotype

IgG

Purification

Affinity purification

Storage

Store at -20°C. Avoid freeze / thaw cycles.

Buffer: PBS with 0.09% Sodium azide, 0.05% BSA, 50% glycerol, pH7.3.

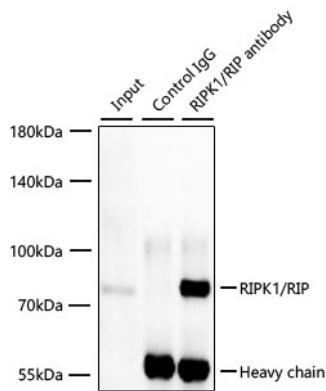
Contact

☎ | 400-999-6126

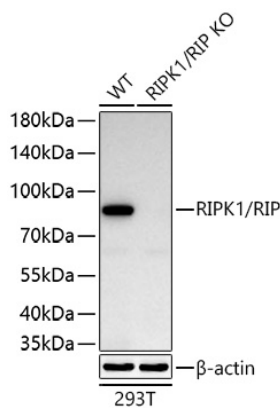
✉ | cn.market@abclonal.com.cn

🌐 | www.abclonal.com.cn

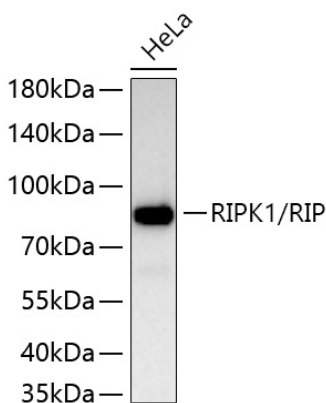
Validation Data



Immunoprecipitation of [KO Validated] RIPK1/RIP from 300 µg extracts of 293T cells was performed using 2 µg of [KO Validated] RIPK1/RIP Rabbit mAb (A28395). Rabbit Control IgG (AC005) was used to precipitate the Control IgG sample. IP samples were eluted with 1x reducing Laemmli Buffer. The Input lane represents 10% of the total input. Western blot analysis of immunoprecipitates was conducted using [KO Validated] RIPK1/RIP Rabbit mAb (A28395) at a dilution of 1:4000.



Western blot analysis of lysates from wild type (WT) and RIPK1/RIP knockout (KO) 293T cells using [KO Validated] RIPK1/RIP Rabbit mAb (A28395) at 1:32000 dilution incubated overnight at 4°C. Secondary antibody: HRP-conjugated Goat anti-Rabbit IgG (H+L) (AS014) at 1:10000 dilution. Lysates/proteins: 25 µg per lane. Blocking buffer: 3% nonfat dry milk in TBST. Detection: ECL Basic Kit (RM00020). Exposure time: 60 s.



Western blot analysis of lysates from HeLa cells using [KO Validated] RIPK1/RIP Rabbit mAb (A28395) at 1:32000 dilution incubated overnight at 4°C. Secondary antibody: HRP-conjugated Goat anti-Rabbit IgG (H+L) (AS014) at 1:10000 dilution. Lysates/proteins: 25 µg per lane. Blocking buffer: 3% nonfat dry milk in TBST. Detection: ECL Basic Kit (RM00020). Exposure time: 60 s.