

HDAC6 Rabbit mAb

Catalog No.: A28459 **Recombinant**

Basic Information

Observed MW

130-170 kDa

Calculated MW

126 kDa

Category

Primary antibody

Applications

WB,IF-P,IHC-P,ELISA

Cross-Reactivity

Mouse, Rat

CloneNo number

ARC77610

Background

Enables several functions, including cytoskeletal protein binding activity; protein lysine deacetylase activity; and ubiquitin binding activity. Involved in several processes, including positive regulation of type 2 mitophagy; protein destabilization; and tubulin deacetylation. Acts upstream of or within several processes, including aggresome assembly; neuron projection morphogenesis; and protein modification process. Located in several cellular components, including dendrite; microtubule cytoskeleton; and perikaryon. Part of cytoplasmic ubiquitin ligase complex. Is expressed in several structures, including central nervous system; early embryo; gut gland; lung; and metanephros. Human ortholog(s) of this gene implicated in chondrodysplasia with platyspondyly, distinctive brachydactyly, hydrocephaly, and micropthalmia and polycystic liver disease 1. Orthologous to human HDAC6 (histone deacetylase 6).

Recommended Dilutions

WB 1:3000 - 1:10000**IF-P** 1:200 - 1:400**IHC-P** 1:500 - 1:2000

ELISA Recommended starting concentration is 1 µg/mL. Please optimize the concentration based on your specific assay requirements. For high-ratio antibody dilutions ($\geq 1:10000$) a sequential dilution method is strongly recommended to ensure measurement accuracy.

Immunogen Information

Gene ID

15185

Swiss Prot

Q9Z2V5

Immunogen

Recombinant protein. This information is considered to be commercially sensitive.

Synonyms

Hd6; Sfc6; Hdac5; mHDA2

Product Information

Source

Rabbit

Isotype

IgG

Purification

Affinity purification

Storage

Store at -20°C. Avoid freeze / thaw cycles.

Buffer: PBS with 0.09% Sodium azide, 0.05% BSA, 50% glycerol, pH7.3.

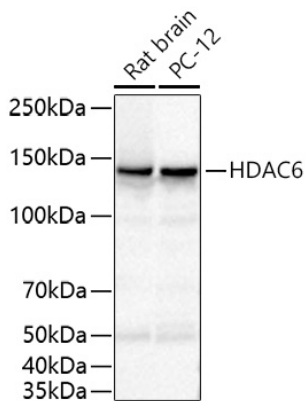
Contact

 | 400-999-6126

 | cn.market@abclonal.com.cn

 | www.abclonal.com.cn

Validation Data



Western blot analysis of various lysates using HDAC6 Rabbit mAb (A28459) at 1:5000 dilution incubated overnight at 4°C.

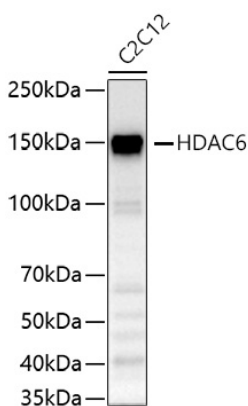
Secondary antibody: HRP-conjugated Goat anti-Rabbit IgG (H+L) (AS014) at 1:10000 dilution.

Lysates/proteins: 25 µg per lane.

Blocking buffer: 3% nonfat dry milk in TBST.

Detection: ECL Basic Kit (RM00020).

Exposure time: 10 s.



Western blot analysis of lysates from C2C12 cells using HDAC6 Rabbit mAb (A28459) at 1:5000 dilution incubated overnight at 4°C.

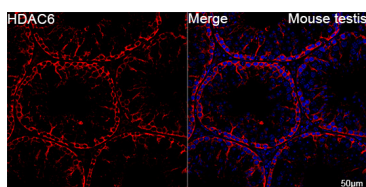
Secondary antibody: HRP-conjugated Goat anti-Rabbit IgG (H+L) (AS014) at 1:10000 dilution.

Lysates/proteins: 25 µg per lane.

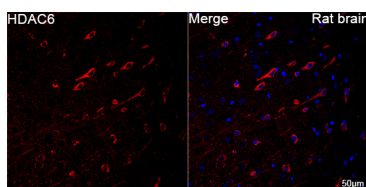
Blocking buffer: 3% nonfat dry milk in TBST.

Detection: ECL Basic Kit (RM00020).

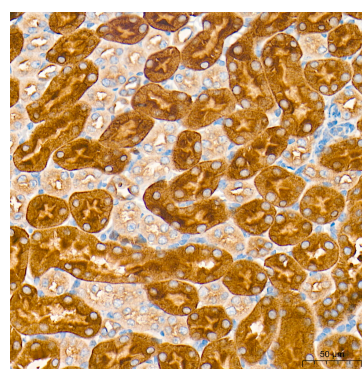
Exposure time: 45 s.



Confocal imaging of paraffin-embedded Mouse testis tissue using HDAC6 Rabbit mAb (A28459, dilution 1:200) followed by a further incubation with Cy3-conjugated Goat anti-Rabbit IgG (H+L) (AS007, dilution 1:500) (Red). DAPI was used for nuclear staining (Blue). High pressure antigen retrieval performed with 0.01M Citrate Buffer (pH 6.0) prior to IF staining. Objective: 40x.

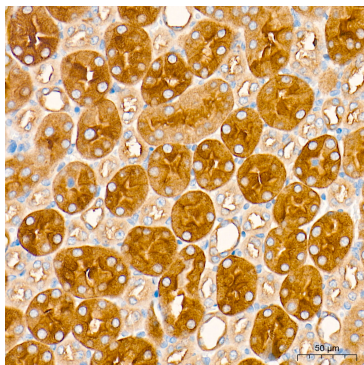


Confocal imaging of paraffin-embedded Rat brain tissue using HDAC6 Rabbit mAb (A28459, dilution 1:200) followed by a further incubation with Cy3-conjugated Goat anti-Rabbit IgG (H+L) (AS007, dilution 1:500) (Red). DAPI was used for nuclear staining (Blue). High pressure antigen retrieval performed with 0.01M Citrate Buffer (pH 6.0) prior to IF staining. Objective: 40x.



Immunohistochemistry analysis of paraffin-embedded Mouse kidney tissue using HDAC6 Rabbit mAb (A28459) at a dilution of 1:2000 (40x lens). High pressure antigen retrieval performed with 0.01M Tris-EDTA Buffer (pH 9.0) prior to IHC staining.

Validation Data



Immunohistochemistry analysis of paraffin-embedded Rat kidney tissue using HDAC6 Rabbit mAb (A28459) at a dilution of 1:2000 (40x lens). High pressure antigen retrieval performed with 0.01M Tris-EDTA Buffer (pH 9.0) prior to IHC staining.