

USP15 Rabbit mAb

Catalog No.: A28494 **Recombinant**

Basic Information

Observed MW

120 kDa

Calculated MW

27 kDa/109-112 kDa

Category

Primary antibody

Applications

WB, IP, ELISA

Cross-Reactivity

Human, Mouse, Rat

CloneNo number

ARC79456

Background

This gene encodes a member of the ubiquitin specific protease (USP) family of deubiquitinating enzymes. USP enzymes play critical roles in ubiquitin-dependent processes through polyubiquitin chain disassembly and hydrolysis of ubiquitin-substrate bonds. The encoded protein associates with the COP9 signalosome, and also plays a role in transforming growth factor beta signalling through deubiquitination of receptor-activated SMAD transcription factors. Alternatively spliced transcript variants encoding multiple isoforms have been observed for this gene, and a pseudogene of this gene is located on the long arm of chromosome 2.

Recommended Dilutions

WB 1:4000 - 1:20000**IP** 0.5µg-4µg antibody for
200 µg-400 µg extracts
of whole cells**ELISA** Recommended starting
concentration is 1 µg/mL.
Please optimize the
concentration based on
your specific assay
requirements. For high-
ratio antibody dilutions
(≥1:10000) a sequential
dilution method is
strongly recommended
to ensure measurement
accuracy.

Immunogen Information

Gene ID

9958

Swiss Prot

Q9Y4E8

Immunogen

Synthetic peptide. This information is considered to be commercially sensitive.

Synonyms

UNPH4; UNPH-2

Product Information

Source

Rabbit

Isotype

IgG

Purification

Affinity purification

Storage

Store at -20°C. Avoid freeze / thaw cycles.

Buffer: PBS with 0.09% Sodium azide, 0.05% BSA, 50% glycerol, pH7.3.

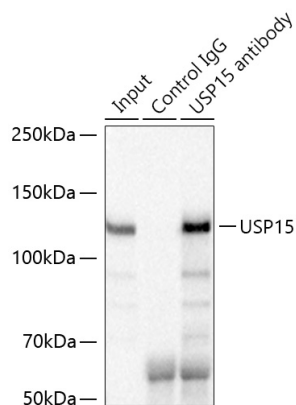
Contact

☎ | 400-999-6126

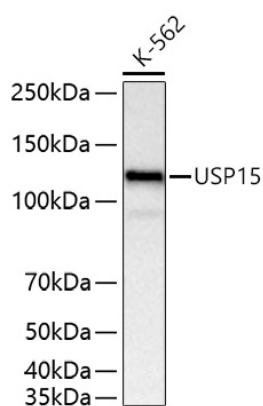
✉ | cn.market@abclonal.com.cn

🌐 | www.abclonal.com.cn

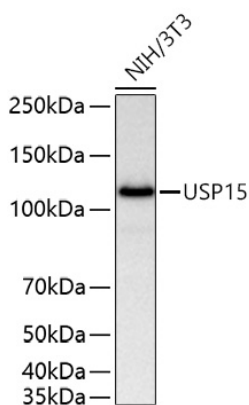
Validation Data



Immunoprecipitation of USP15 from 300 µg extracts of K-562 cells was performed using 1 µg of USP15 Rabbit mAb (A28494). Rabbit Control IgG (AC005) was used to precipitate the Control IgG sample. IP samples were eluted with 1x Laemmli Buffer. The Input lane represents 10% of the total input. Western blot analysis of immunoprecipitates was conducted using USP15 Rabbit mAb (A28494) at a dilution of 1:8000.



Western blot analysis of lysates from K-562 cells using USP15 Rabbit mAb (A28494) at 1:10000 dilution incubated overnight at 4°C.
Secondary antibody: HRP-conjugated Goat anti-Rabbit IgG (H+L) (AS014) at 1:10000 dilution.
Lysates/proteins: 25 µg per lane.
Blocking buffer: 3% nonfat dry milk in TBST.
Detection: ECL Basic Kit (RM00020).
Exposure time: 5 s.



Western blot analysis of lysates from NIH/3T3 cells using USP15 Rabbit mAb (A28494) at 1:10000 dilution incubated overnight at 4°C.
Secondary antibody: HRP-conjugated Goat anti-Rabbit IgG (H+L) (AS014) at 1:10000 dilution.
Lysates/proteins: 25 µg per lane.
Blocking buffer: 3% nonfat dry milk in TBST.
Detection: ECL Basic Kit (RM00020).
Exposure time: 5 s.