

THBS1 Rabbit mAb

Catalog No.: A28497 **Recombinant**

Basic Information

Observed MW

170 kDa

Calculated MW

129 kDa/120 kDa

Category

Primary antibody

Applications

WB,IP,IHC-P,ELISA

Cross-Reactivity

Human, Mouse, Rat

CloneNo number

ARC79889

Background

The protein encoded by this gene is a subunit of a disulfide-linked homotrimeric protein. This protein is an adhesive glycoprotein that mediates cell-to-cell and cell-to-matrix interactions. This protein can bind to fibrinogen, fibronectin, laminin, type V collagen and integrins alpha-V/beta-1. This protein has been shown to play roles in platelet aggregation, angiogenesis, and tumorigenesis.

Recommended Dilutions

WB	1:2000 - 1:5000
IP	0.5µg - 4µg antibody for 200µg - 400µg extracts of whole cells
IHC-P	1:200 - 1:800
ELISA	Recommended starting concentration is 1 µg/mL. Please optimize the concentration based on your specific assay requirements. For high- ratio antibody dilutions (≥1:10000) a sequential dilution method is strongly recommended to ensure measurement accuracy.

Immunogen Information

Gene ID

7057

Swiss Prot

P07996

Immunogen

Synthetic peptide. This information is considered to be commercially sensitive.

Synonyms

TSP; THBS; TSP1; TSP-1; THBS-1

Product Information

Source

Rabbit

Isotype

IgG

Purification

Affinity purification

Storage

Store at -20°C. Avoid freeze / thaw cycles.

Buffer: PBS with 0.09% Sodium azide,0.05% BSA,50% glycerol,pH7.3.

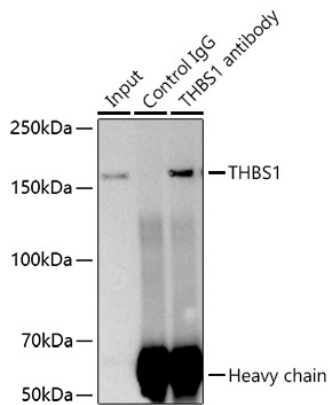
Contact

 | 400-999-6126

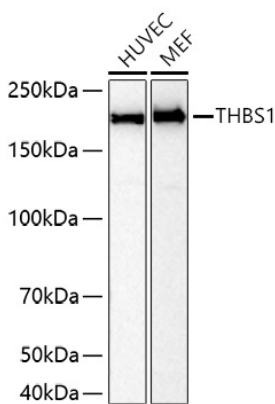
 | cn.market@abclonal.com.cn

 | www.abclonal.com.cn

Validation Data



Immunoprecipitation of THBS1 from 300 µg extracts of HUVEC cells was performed using 2 µg of THBS1 Rabbit mAb (A28497). Rabbit Control IgG (AC005) was used to precipitate the Control IgG sample. IP samples were eluted with 1x Laemmli Buffer. The Input lane represents 10% of the total input. Western blot analysis of immunoprecipitates was conducted using THBS1 Rabbit mAb (A28497) at a dilution of 1:5000.



Western blot analysis of various lysates using THBS1 Rabbit mAb (A28497) at 1:5000 dilution incubated overnight at 4°C.

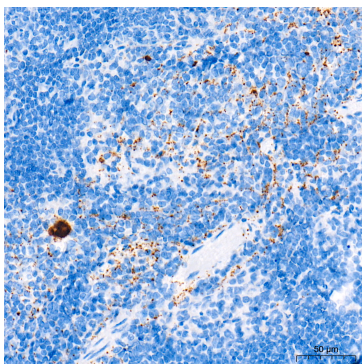
Secondary antibody: HRP-conjugated Goat anti-Rabbit IgG (H+L) (AS014) at 1:10000 dilution.

Lysates/proteins: 25 µg per lane.

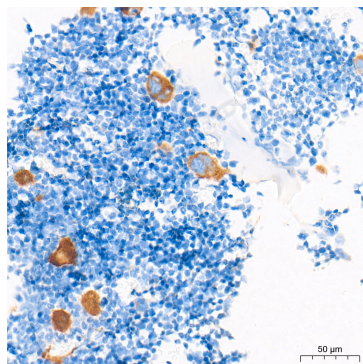
Blocking buffer: 3% nonfat dry milk in TBST.

Detection: ECL Basic Kit (RM00020).

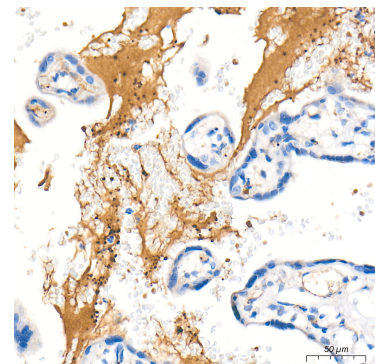
Exposure time: 45 s.



Immunohistochemistry analysis of paraffin-embedded Mouse spleen tissue using THBS1 Rabbit mAb (A28497) at a dilution of 1:500 (40x lens). High pressure antigen retrieval performed with 0.01M Tris-EDTA Buffer (pH 9.0) prior to IHC staining.

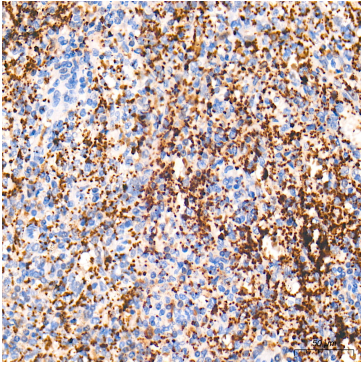


Immunohistochemistry analysis of paraffin-embedded Mouse bone marrow tissue using THBS1 Rabbit mAb (A28497) at a dilution of 1:500 (40x lens). High pressure antigen retrieval performed with 0.01M Tris-EDTA Buffer (pH 9.0) prior to IHC staining.

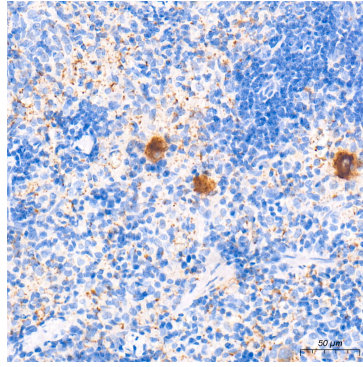


Immunohistochemistry analysis of paraffin-embedded Human placenta tissue using THBS1 Rabbit mAb (A28497) at a dilution of 1:500 (40x lens). High pressure antigen retrieval performed with 0.01M Tris-EDTA Buffer (pH 9.0) prior to IHC staining.

Validation Data



Immunohistochemistry analysis of paraffin-embedded Human spleen tissue using THBS1 Rabbit mAb (A28497) at a dilution of 1:500 (40x lens). High pressure antigen retrieval performed with 0.01M Tris-EDTA Buffer (pH 9.0) prior to IHC staining.



Immunohistochemistry analysis of paraffin-embedded Rat spleen tissue using THBS1 Rabbit mAb (A28497) at a dilution of 1:500 (40x lens). High pressure antigen retrieval performed with 0.01M Tris-EDTA Buffer (pH 9.0) prior to IHC staining.