

PE/Cyanine7 Rabbit anti-Human CD42b mAb

Catalog No.: A28503

Basic Information

Observed MW

Calculated MW

72 kDa

Category

Primary antibody

Applications

FC

Cross-Reactivity

Human

CloneNo number

ARC56628

Conjugate

PE-Cy7. Ex:565nm. Em:778nm.

Background

CD42b is a 145 kDa glycoprotein, also known as gplb α . It forms a covalent linkage with CD42c to constitute the GPIb complex. CD42b is expressed on platelets and megakaryocytes. The CD42b/c heterodimer assembles with CD42a and CD42d to form a larger complex, which functions as a platelet receptor for von Willebrand factor (vWF) and thrombin.

Recommended Dilutions

FC 5 μ l per 10^6 cells in
100 μ l volume

Immunogen Information

Gene ID

2811

Swiss Prot

P07359

Immunogen

Recombinant protein (or fragment). This information is considered to be commercially sensitive.

Synonyms

BSS; GP1B; VWDP; CD42B; GPIbA; BDPLT1; BDPLT3; DBPLT3; GPIbalpha; CD42b-alpha

Contact

 | 400-999-6126

 | cn.market@abclonal.com.cn

 | www.abclonal.com.cn

Product Information

Source

Rabbit

Isotype

IgG

Purification

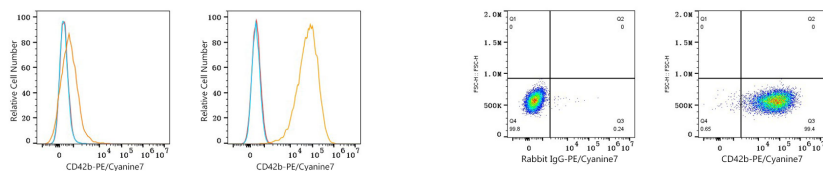
Affinity purification

Storage

Store at 2-8°C. Avoid freeze.

Buffer: PBS with 0.09% Sodium azide, 0.2% BSA, pH7.3.

Validation Data



Flow cytometry: 1X10⁶ HAP1 cells (negative control, left) and HEL cells (right) were surface-stained with PE/Cyanine7 Rabbit anti-Human CD42b mAb (A28503, 5 µl/Test, orange line) or PE/Cyanine7 Rabbit IgG isotype control (5 µl/Test, blue line). Non-fluorescently stained cells were used as blank control (red line).

Flow cytometry: 1X10⁶ HEL cells were surface-stained with PE/Cyanine7 Rabbit IgG isotype control (5 µl/Test, left) or PE/Cyanine7 Rabbit anti-Human CD42b mAb (A28503, 5 µl/Test, right).