

IRF1 Rabbit pAb

Catalog No.: A28508

Basic Information

Observed MW

45-48 kDa

Calculated MW

37 kDa

Category

Primary antibody

Applications

WB, ELISA

Cross-Reactivity

Mouse

Background

Enables DNA-binding transcription factor activity, RNA polymerase II-specific and sequence-specific DNA binding activity. Involved in several processes, including defense response to other organism; regulation of T cell activation; and regulation of gene expression. Acts upstream of or within CD8-positive, alpha-beta T cell differentiation; positive regulation of interleukin-12 production; and positive regulation of transcription by RNA polymerase II. Located in cytoplasm and nucleus. Is expressed in several structures, including bone marrow; early conceptus; eye; genitourinary system; and gut. Human ortholog(s) of this gene implicated in asthma; immunodeficiency 117; lung cancer (multiple); smallpox; and stomach cancer (multiple). Orthologous to human IRF1 (interferon regulatory factor 1).

Recommended Dilutions

WB 1:1000 - 1:6000

ELISA Recommended starting concentration is 1 µg/mL. Please optimize the concentration based on your specific assay requirements. For high-ratio antibody dilutions ($\geq 1:10000$) a sequential dilution method is strongly recommended to ensure measurement accuracy.

Contact

☎ | 400-999-6126

✉ | cn.market@abclonal.com.cn

🌐 | www.abclonal.com.cn

Immunogen Information

Gene ID

16362

Swiss Prot

P15314

Immunogen

Synthetic peptide. This information is considered to be commercially sensitive.

Synonyms

Irf-1

Product Information

Source

Rabbit

Isotype

IgG

Purification

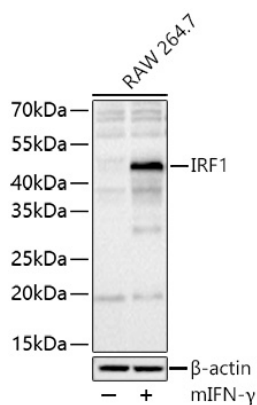
Affinity purification

Storage

Store at -20°C. Avoid freeze / thaw cycles.

Buffer: PBS with 0.09% Sodium azide, 50% glycerol, pH7.3.

Validation Data



Western blot analysis of lysates from RAW 264.7 cells using IRF1 Rabbit pAb (A28508) at 1:3000 dilution incubated overnight at 4°C. RAW 264.7 cells were treated with mIFN-γ(100 ng/mL) for 18 hours. Secondary antibody: HRP-conjugated Goat anti-Rabbit IgG (H+L) (AS014) at 1:10000 dilution. Lysates/proteins: 30 µg per lane. Blocking buffer: 3% nonfat dry milk in TBST. Detection: ECL Basic Kit (RM00020). Exposure time: 20 s.