

CX3CL1 Rabbit mAb

Catalog No.: A28511 **Recombinant**

Basic Information

Observed MW

85 kDa

Calculated MW

42 kDa

Category

Primary antibody

Applications

WB,IP,IHC-P,ELISA

Cross-Reactivity

Mouse

CloneNo number

ARC80042

Background

Enables CX3C chemokine receptor binding activity. Acts upstream of or within several processes, including leukocyte chemotaxis; negative regulation of extrinsic apoptotic signaling pathway in absence of ligand; and positive regulation of transforming growth factor beta1 production. Located in neuron projection; neuronal cell body; and plasma membrane. Is expressed in several structures, including brain; genitourinary system; gut; nose; and respiratory system. Human ortholog(s) of this gene implicated in Cor pulmonale and common cold. Orthologous to human CX3CL1 (C-X3-C motif chemokine ligand 1).

Recommended Dilutions

WB	1:2000 - 1:5000
IP	0.5 µg-4 µg antibody for 400 µg-600 µg extracts of whole cells
IHC-P	1:1000 - 1:4000
ELISA	Recommended starting concentration is 1 µg/mL. Please optimize the concentration based on your specific assay requirements. For high- ratio antibody dilutions (≥1:10000) a sequential dilution method is strongly recommended to ensure measurement accuracy.

Immunogen Information

Gene ID	Swiss Prot
20312	O35188

Immunogen

Recombinant protein (or fragment). This information is considered to be commercially sensitive.

Synonyms

ABCD-3; CX3C; Cxc3; D8Bwg0439e; FK; Scyd1

Product Information

Source	Isotype	Purification
Rabbit	IgG	Affinity purification

Storage

Store at -20°C. Avoid freeze / thaw cycles.

Buffer: PBS with 0.09% Sodium azide, 50% glycerol, pH7.3.

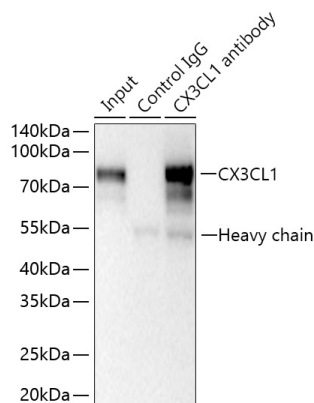
Contact

 | 400-999-6126

 | cn.market@abclonal.com.cn

 | www.abclonal.com.cn

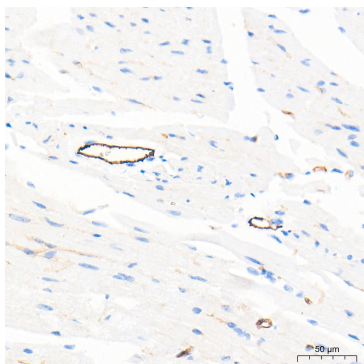
Validation Data



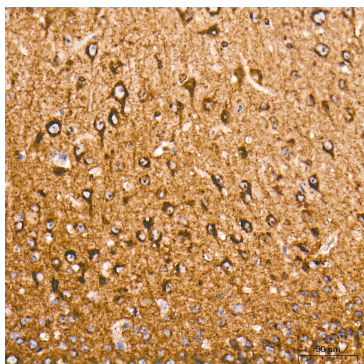
Immunoprecipitation of CX3CL1 from 600 µg extracts of Mouse brain tissue was performed using 2 µg of CX3CL1 Rabbit mAb (A28511). Rabbit Control IgG (AC005) was used to precipitate the Control IgG sample. IP samples were eluted with 1x Laemmli Buffer. The Input lane represents 10% of the total input. Western blot analysis of immunoprecipitates was conducted using CX3CL1 Rabbit mAb (A28511) at a dilution of 1:5000.



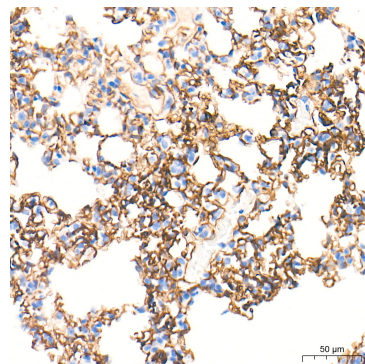
Western blot analysis of lysates from Mouse brain using CX3CL1 Rabbit mAb (A28511) at 1:5000 dilution incubated overnight at 4°C. Secondary antibody: HRP-conjugated Goat anti-Rabbit IgG (H+L) (AS014) at 1:10000 dilution. Lysates/proteins: 25 µg per lane. Blocking buffer: 3% nonfat dry milk in TBST. Detection: ECL Basic Kit (RM00020). Exposure time: 60 s.



Immunohistochemistry analysis of paraffin-embedded Mouse heart tissue using CX3CL1 Rabbit mAb (A28511) at a dilution of 1:2000 (40x lens). High pressure antigen retrieval performed with 0.01M Tris-EDTA Buffer (pH 9.0) prior to IHC staining.

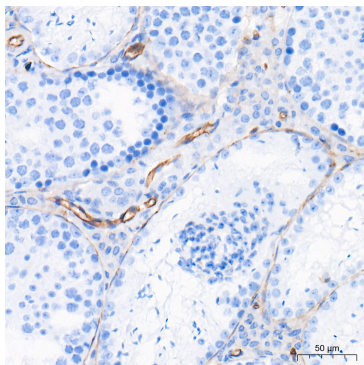


Immunohistochemistry analysis of paraffin-embedded Mouse brain tissue using CX3CL1 Rabbit mAb (A28511) at a dilution of 1:2000 (40x lens). High pressure antigen retrieval performed with 0.01M Tris-EDTA Buffer (pH 9.0) prior to IHC staining.



Immunohistochemistry analysis of paraffin-embedded Mouse lung tissue using CX3CL1 Rabbit mAb (A28511) at a dilution of 1:2000 (40x lens). High pressure antigen retrieval performed with 0.01M Tris-EDTA Buffer (pH 9.0) prior to IHC staining.

Validation Data



Immunohistochemistry analysis of paraffin-embedded Mouse testis tissue using CX3CL1 Rabbit mAb (A28511) at a dilution of 1:2000 (40x lens). High pressure antigen retrieval performed with 0.01M Tris-EDTA Buffer (pH 9.0) prior to IHC staining.